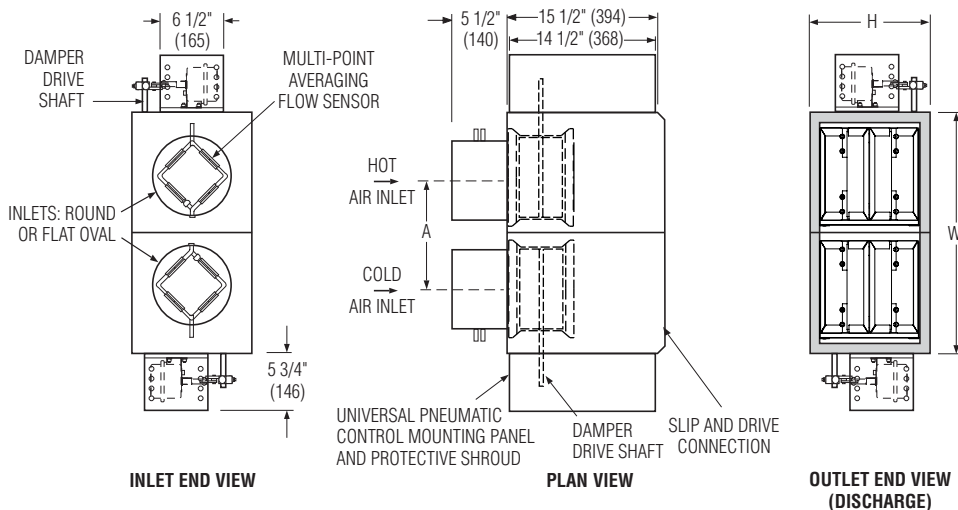




**DUAL DUCT TERMINAL UNIT  
WITHOUT MIXING ATTENUATOR  
PNEUMATIC CONTROL • PRESSURE INDEPENDENT  
MODEL: P3210**



**Dimensional Data**

Unit Size	Airflow Range cfm (l/s)	W	H	A	Inlet Size
4	0 – 180 (0 – 85)	21 (533)	10 (254)	11 (279)	3 7/8 (98) Round
5	0 – 325 (0 – 153)	21 (533)	10 (254)	11 (279)	4 7/8 (124) Round
6	0 – 450 (0 – 212)	21 (533)	10 (254)	11 (279)	5 7/8 (149) Round
7	0 – 650 (0 – 307)	25 (635)	12 1/2 (318)	13 (330)	6 7/8 (175) Round
8	0 – 900 (0 – 425)	25 (635)	12 1/2 (318)	13 (330)	7 7/8 (200) Round
9	0 – 1150 (0 – 543)	29 (737)	12 1/2 (318)	15 (381)	8 7/8 (225) Round
10	0 – 1500 (0 – 708)	29 (737)	12 1/2 (318)	15 (381)	9 7/8 (251) Round
12	0 – 2050 (0 – 967)	37 (940)	12 1/2 (318)	19 (483)	12 15/16 x 9 13/16 (329 x 249) Oval
14	0 – 2550 (0 – 1203)	49 (1245)	12 1/2 (318)	25 (635)	16 1/16 x 9 13/16 (408 x 249) Oval
16	0 – 3040 (0 – 1435)	57 (1448)	12 1/2 (318)	29 (737)	19 3/16 x 9 13/16 (487 x 249) Oval

**Standard Features:**

- 22 ga. (0.86) zinc coated steel casing, mechanically sealed, low leakage construction.
- 16 ga. (1.63) corrosion-resistant steel inclined opposed blade dampers with extruded PVC seals (single blade on size 4, 5, 6). 45° rotation, CW to close. Tight shut-off. Damper leakage is less than 2% of the terminal rated airflow at 3" w.g. (750 Pa).
- 1/2" (13) dia. plated steel drive shaft. An indicator mark on the end of the shaft shows damper position.
- Multi-point averaging Diamond Flow Sensors in each inlet. Aluminum construction. Supplied with balancing tees.

- Rectangular discharge with slip and drive cleat duct connection.
- Universal control mounting panel with double wall stand-off construction.
- 3/4" (19), dual density insulation, exposed edges coated to prevent air erosion. Meets the requirements of NFPA 90A and UL 181.
- Choice of right or left-hand cold deck location. Unit is flippable. Hand of unit is determined by location of cold deck looking in direction of airflow. Right-hand unit illustrated.

**Controls:**

- By Nailor.
- By others.

**Options and Accessories:**

- Steri-liner.
- Fiber-free liner.
- Solid metal liner.
- 1" (25) liner.
- Perforated metal liner.
- Hanger brackets.
- Factory wrapped inlets and outlet.
- Protective controls shroud cover.
- Removable flow sensors.
- Seismic Certification:
  - SSI (Standard)
  - OSHPD
  - Special Features: \_\_\_\_\_

<b>SCHEDULE TYPE:</b>	
<b>PROJECT:</b>	
<b>ENGINEER:</b>	
<b>CONTRACTOR:</b>	

Page 1 of 1.  
Dimensions are in inches (mm).

DATE	B SERIES	SUPERSEDES	DRAWING NO.
3 - 9 - 18	3200	3 - 8 - 17	P3210