



## DAMPER CONTROL PANEL

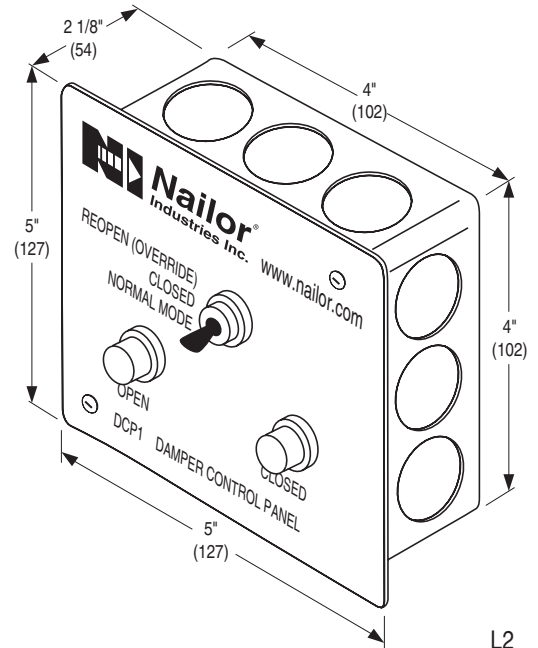
FOR USE WITH COMBINATION FIRE/SMOKE DAMPERS WITH DTO DUAL TEMPERATURE OVERRIDE (MLS-400)  
**MODEL: DCP1 TOGGLE SWITCH WITH LIGHTS**

The DCP1 is a toggle switch operated control panel with position indicator lights for use with Nailor Combination Fire/Smoke Dampers equipped with the DTO Dual Temperature Override Option (formerly MLS-400). The DCP1 provides the ability to open or close the damper in a dynamic smoke management system or to test the damper. Indicator lights on the DCP1 panel provide visual confirmation of the damper position.

The toggle switch is a 3 position control switch with the following options:  
**NORMAL:** Damper remains open until closed by the primary heat sensor or smoke detector signal.

**CLOSED:** Damper closes and remains closed regardless of any sensor signal.  
**REOPEN:** The damper opens and remains open (override position) until the secondary hi-limit sensor signals the damper to close and lock.

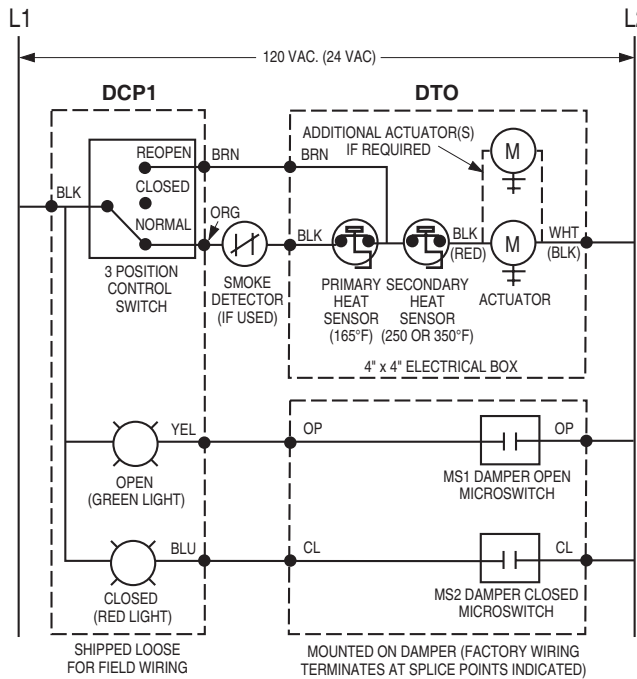
The DCP1 is shipped loose for field mounting and wiring either near the damper or in a remote location.



### VOLTAGE:

- 120 120 VAC
- 24 24 VAC/DC
- 230 230 VAC

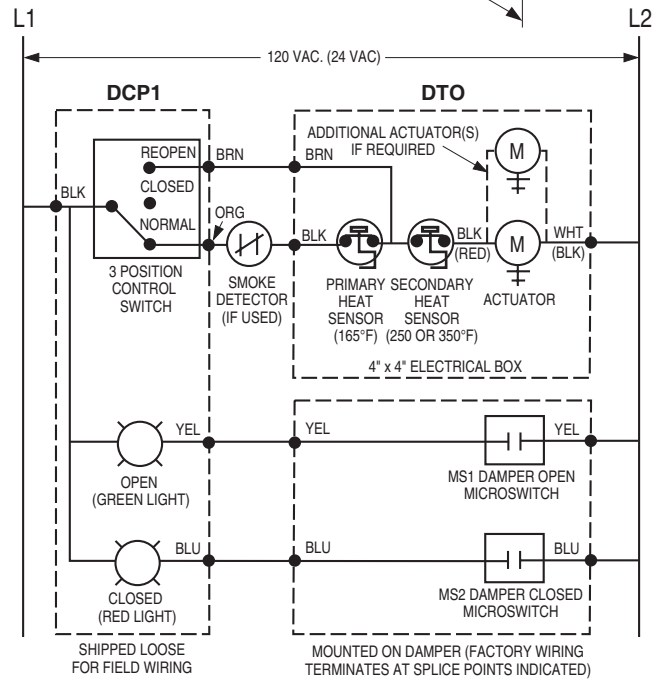
### WIRING DIAGRAMS:



**DCP1/DTO with Belimo built-in (auxiliary switches) position indicator package**

#### Belimo Actuator Aux. Switch Wiring Connections

Model Series	Open (OP)	Closed (CL)
FSTF	Orange / Gray	Violet / Red
FSLF / FSAF	Gray / Gray	Violet / Violet
FSNF / FSAFB	White S4 / S6	White S1 / S2



**DCP1/DTO with Nailor or Honeywell built-in (actuator auxiliary switches) position indicator package**

### SCHEDULE TYPE:

### PROJECT:

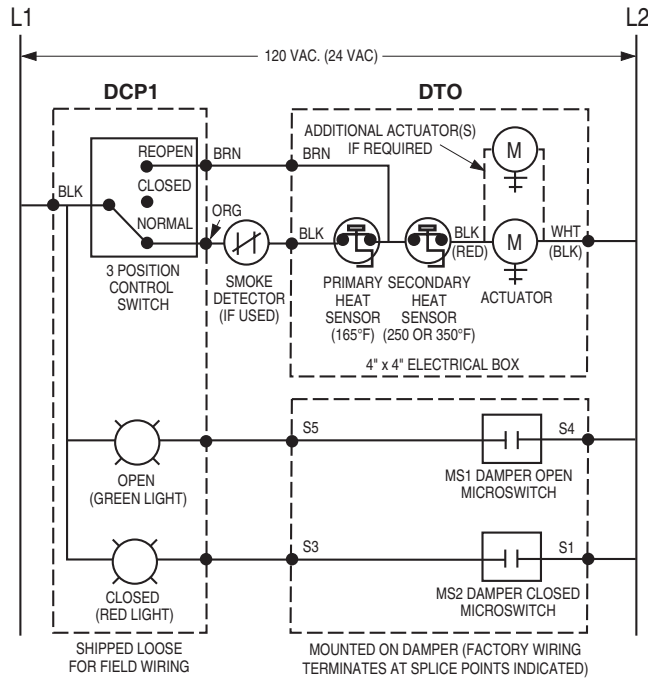
### ENGINEER:

### CONTRACTOR:

Page 1 of 2  
 Dimensions are in inches (mm).

DATE	B SERIES	SUPERSEDES	DRAWING NO.
9 - 3 - 20	FD-ACC	8 - 8 - 17	DCP1

**WIRING DIAGRAMS:**



**DCP1/DTO with Siemens GJD Series built-in (actuator auxiliary switches) position indicator package**

<b>SCHEDULE TYPE:</b>	Page 2 of 2 Dimensions are in inches (mm).			
<b>PROJECT:</b>				
<b>ENGINEER:</b>	<b>DATE</b>	<b>B SERIES</b>	<b>SUPERSEDES</b>	<b>DRAWING NO.</b>
<b>CONTRACTOR:</b>	9 - 3 - 20	FD-ACC	8 - 8 - 17	DCP1