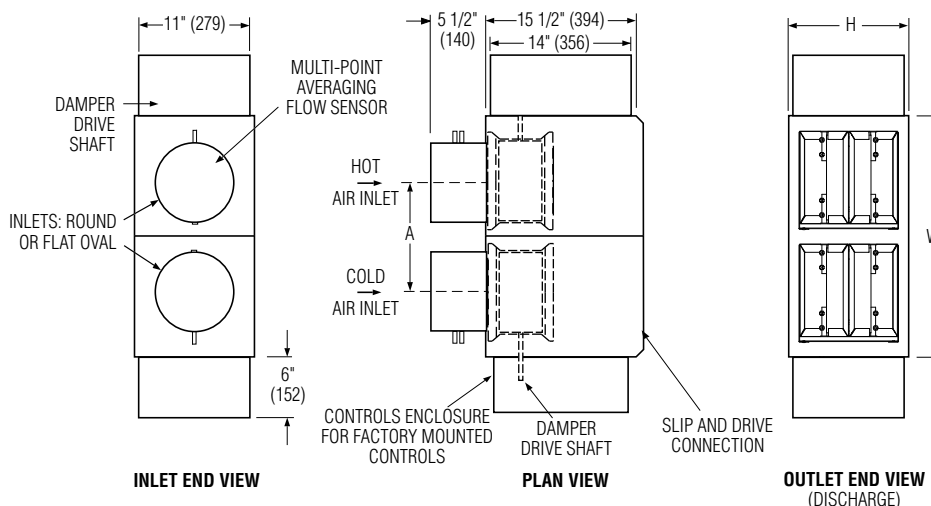




**DUAL DUCT TERMINAL UNIT
WITHOUT MIXING ATTENUATOR
DIGITAL ELECTRONIC CONTROL
MODEL: D3210**



Dimensional Data

Unit Size	Airflow Range, cfm (l/s) Digital/Analog Controls	W	H	A	Inlet Size
4	0 – 225/180 (0 – 106/85)	21 (533)	10 (254)	11 (279)	3 7/8 (98) Round
5	0 – 400/325 (0 – 189/153)	21 (533)	10 (254)	11 (279)	4 7/8 (124) Round
6	0 – 550/450 (0 – 260/212)	21 (533)	10 (254)	11 (279)	5 7/8 (149) Round
7	0 – 800/650 (0 – 378/307)	25 (635)	12 1/2 (318)	13 (330)	6 7/8 (175) Round
8	0 – 1100/900 (0 – 519/425)	25 (635)	12 1/2 (318)	13 (330)	7 7/8 (200) Round
9	0 – 1400/1150 (0 – 661/543)	29 (737)	12 1/2 (318)	15 (381)	8 7/8 (225) Round
10	0 – 1840/1500 (0 – 868/708)	29 (737)	12 1/2 (318)	15 (381)	9 7/8 (251) Round
12	0 – 2500/2050 (0 – 1180/967)	37 (940)	12 1/2 (318)	19 (483)	12 15/16 x 9 13/16 (329 x 249) Oval
14	0 – 3125/2550 (0 – 1475/1203)	49 (1245)	12 1/2 (318)	25 (635)	16 1/16 x 9 13/16 (408 x 249) Oval
16	0 – 3725/3040 (0 – 1758/1435)	57 (1448)	12 1/2 (318)	29 (737)	19 3/16 x 9 13/16 (487 x 249) Oval

Standard Features:

- 22 ga. (0.86) zinc coated steel casing, mechanically sealed, low leakage construction.
- 16 ga. (1.63) corrosion-resistant steel inclined opposed blade dampers with extruded PVC seals (single blade on size 4, 5, 6). 45° rotation, CW to close. Tight shut-off. Damper leakage is less than 2% of the terminal rated airflow at 3" w.g. (750 Pa).
- 1/2" (13) dia. plated steel drive shaft. An indicator mark on the end of the shaft shows damper position.
- Multi-point averaging Diamond Flow Sensors in each inlet. Supplied with balancing tees.
- Rectangular discharge with slip and drive cleat duct connection.
- Full NEMA1 type enclosure for factory mounted controls.

- 3/4" (19), dual density insulation, exposed edges coated to prevent air erosion. Meets the requirements of NFPA 90A and UL 181.
- Choice of right or left-hand cold deck location. Unit is flippable. Hand of unit is determined by location of cold deck looking in direction of airflow. Right-hand unit illustrated.

OPTIONS:

- Digital Controls:**
- Factory mounted (supplied by others)
 - Field mounted (supplied by others)
 - Nailor EZvav. See separate submittal.
- Liner:**
- Steri-liner
 - Fiber-free
 - Perforated metal
 - Solid metal
 - 1" (25) fiberglass

Other:

- Removable flow sensors.
 - 24 VAC control transformer.
 - 20 ga. (1.00) construction.
 - Toggle disconnect switch.
 - Controls enclosure for field mounted controls.
 - Hanger brackets.
 - Dust tight enclosure seal.
 - Factory wrapped inlets and outlet.
 - Hanger brackets.
- Seismic Certification:**
- Seismic Source International (Standard)
 - HCAI (formerly OSHPD, California)
 - Special Features: _____

SCHEDULE TYPE:
PROJECT:
ENGINEER:
CONTRACTOR:

Page 1 of 1.
Dimensions are in inches (mm).

DATE	B SERIES	SUPERSEDES	DRAWING NO.
2 - 6 - 23	3200	3 - 9 - 18	D3210