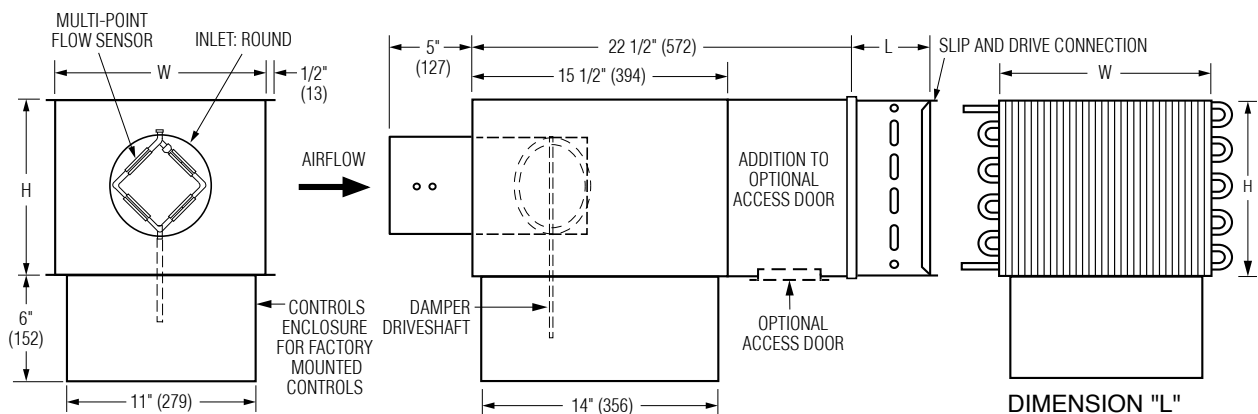




**SINGLE DUCT TERMINAL UNIT W/ HOT WATER REHEAT
OVERSIZED CASING (LARGER WATER COIL)
DIGITAL CONTROL • PRESSURE INDEPENDENT
VARIABLE OR CONSTANT VOLUME
MODEL: D31RW WITH BOTTOM MOUNT CONTROLS
LOCATION (OPTION OB)**



DIMENSION "L"
1 or 2 row coils L=5" (127)
3 or 4 row coils L=7 1/2" (191)

Dimensional Data

Unit Size	Inlet Size	Airflow Range* cfm (l/s)	W	H	Inlet Size	Coil Connections			
						1 Row	2 Row	3 Row	4 Row
8	4	0 – 225 (0 – 106)	12 (305)	10 (254)	3 7/8 (98) Round	1/2 (13)	7/8 (22)	7/8 (22)	7/8 (22)
	5	0 – 400 (0 – 189)			4 7/8 (124) Round	1/2 (13)	7/8 (22)	7/8 (22)	7/8 (22)
	6	0 – 550 (0 – 260)			5 7/8 (149) Round	1/2 (13)	7/8 (22)	7/8 (22)	7/8 (22)
10	7	0 – 800 (0 – 378)	14 (356)	12 1/2 (318)	6 7/8 (175) Round	1/2 (13)	7/8 (22)	7/8 (22)	7/8 (22)
	8	0 – 1100 (0 – 519)			7 7/8 (200) Round	1/2 (13)	7/8 (22)	7/8 (22)	7/8 (22)
12	9	0 – 1400 (0 – 661)	16 (406)	15 (381)	8 7/8 (225) Round	1/2 (13)	7/8 (22)	7/8 (22)	7/8 (22)
	10	0 – 1840 (0 – 868)			9 7/8 (251) Round	1/2 (13)	7/8 (22)	7/8 (22)	7/8 (22)
14	12	0 – 2500 (0 – 1180)	20 (508)	17 1/2 (508)	11 7/8 (302) Round	1/2 (13)	7/8 (22)	7/8 (22)	7/8 (22)
16	14	0 – 3370 (0 – 1590)	24 (610)	18 (457)	13 7/8 (352) Round	7/8 (22)	7/8 (22)	7/8 (22)	7/8 (22)
24	16	0 – 4525 (0 – 2135)	38 (965)	18 (457)	15 7/8 (403) Round	7/8 (22)	7/8 (22)	1 3/8 (35)	1 3/8 (35)



* Maximum airflow limit is based upon 1.5" w.g. (373 Pa) max. differential pressure signal from Flow Sensor.

Standard Features:

- Bottom mount controls location with vertical drive shaft (option code OB).
- 22 ga. (0.86) galvanized steel casing, mechanically sealed, low leakage construction. Leakage is less than 1% of the terminal rated airflow at 1" w.g. (250 Pa).
- 2 x 20 ga. (0.86) round laminated butterfly damper with a polyurethane peripheral gasket. 90° rotation, CW to close. Tight shut-off. Damper leakage is less the 1% of the terminal rated airflow at 3" w.g. (750 pa.) and less than 2% at 6" w.g. (1500 pa.) as tested in accordance with ANSI / ASHRAE Standard 130.
- 1/2" (13) dia. plated steel drive shaft. An indicator mark on the end of the shaft shows damper position.
- Unit sizes 4–16 feature round inlet collars.
- Multi-point averaging Diamond Flow Sensor. Supplied with balancing tees (4 and 5 are Annubar).

- Rectangular discharge with slip and drive cleat duct connection.
- Full NEMA 1 type controls enclosure for factory mounted controls.
- 3/4" (19), dual density insulation, exposed edges coated to prevent air erosion. Meets the requirements of NFPA 90A and UL 181.

Hot Water Coil Section:

- 1/2" (13) Copper tubes and aluminum ripple fins, 10 per inch.
- 1, 2, 3 or 4 row.
- Left or right hand connection. Determined by looking in direction of airflow (RH illustrated).
- 1/2" (13), 7/8" (22) or 1 3/8" (35) O.D. male solder sweat connections.

Digital Controls:

- Factory mounted (supplied by others)
- Field mounted (supplied by others)
- Nailor EZvav. See separate submittal.

Options and Accessories:

- 24 VAC control transformer
- Toggle disconnect switch
- Dust tight enclosure seal
- Liner:**
- Steri-liner
- Steri-liner + Perforated metal
- Fiber-free
- Perforated metal
- Solid metal
- 1" (25) fiberglass
- Flow Sensor:**
- Diamond Flow Sensor, removable
- Cross Flow Sensor
- Cross Flow Sensor, removable
- Other:**
- Bottom access door
- Hanger brackets
- Ultra low leakage casing
- Controls enclosure for field mounted controls
- Special features: _____

SCHEDULE TYPE:

PROJECT:

ENGINEER:

CONTRACTOR:

Page 1 of 2.
Dimensions are in inches (mm).

DATE	B SERIES	SUPERSEDES	DRAWING NO.
2 - 6 - 23	3100	5 - 10 - 21	D31RW-OC-2

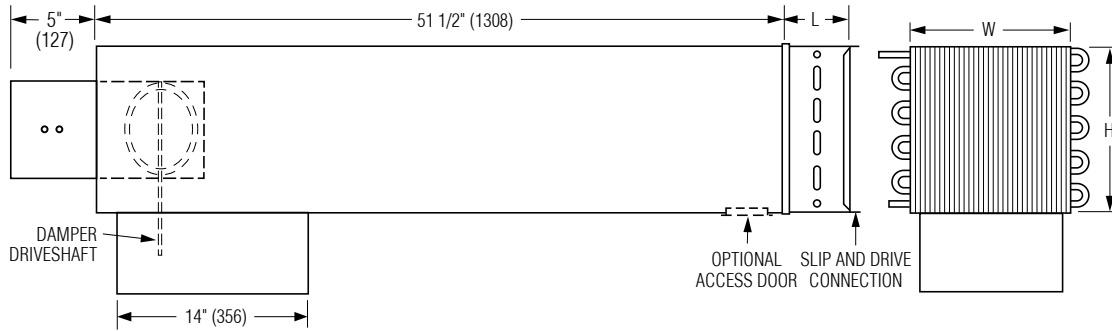


SINGLE DUCT TERMINAL UNIT W/ HOT WATER REHEAT ACCESSORIES
 OVERSIZED CASING (LARGER WATER COIL)
 DIGITAL CONTROL • PRESSURE INDEPENDENT
MODEL: D31RW WITH BOTTOM MOUNT CONTROLS LOCATION (OPTION OB)

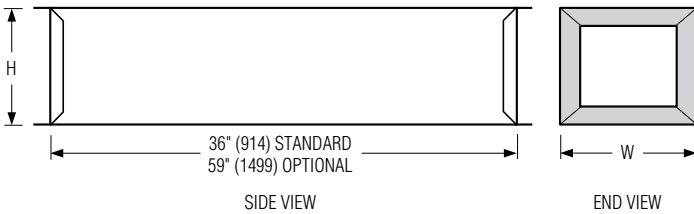
Integral Sound Attenuator plus Hot Water Coil

- Single continuous length terminal construction minimizes casing leakage.
- Continuous internal insulation reduces insulation seams and minimizes airflow disturbance.
- Supplied with same liner as basic unit.

DIMENSION "L"
 1 or 2 row coils L=5" (127)
 3 or 4 row coils L=7 1/2" (191)

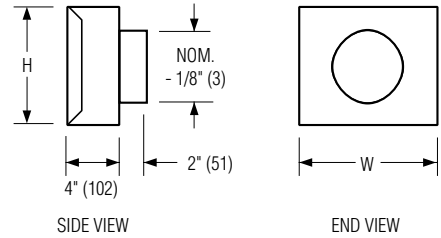


AT Discharge Sound Attenuator (loose)



- Shipped loose for field attachment.
 - Slip and drive connection.
 - Supplied as standard with same liner as basic unit.
- AT313 3' (916) Long - Standard.**
 AT315 5' (1524) Long - Optional.
 Special Features: _____

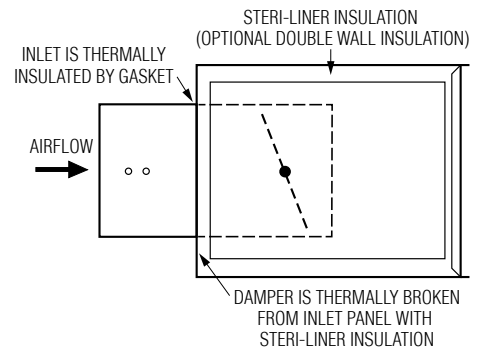
FF Round Discharge Collar



Dimensional Data

Unit Size	W	H	AD	FF Nominal Outlet Size
8	12 (305)	12 1/2 (318)	12 (305)	8 (203)
10	14 (356)	12 1/2 (318)	12 (305)	10 (254)
12	18 (457)	12 1/2 (318)	12 (305)	12 (305)
14	24 (610)	12 1/2 (318)	12 (305)	14 (356)
16	28 (711)	12 1/2 (318)	12 (305)	16 (406)
24	38 (965)	18 (457)	12 (305)	-

FTL Low Temperature Construction



SCHEDULE TYPE:

PROJECT:

ENGINEER:

CONTRACTOR:

Page 2 of 2.
 Dimensions are in inches (mm).

DATE	B SERIES	SUPERSEDES	DRAWING NO.
2 - 6 - 23	3100	5 - 10 - 21	D31RW-OC-2