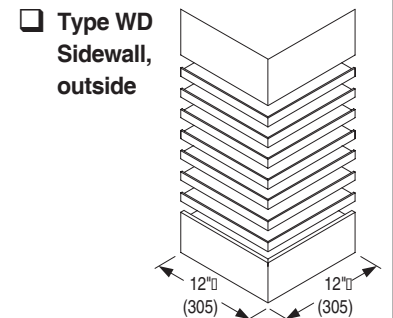
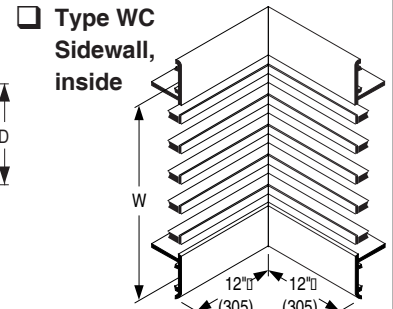
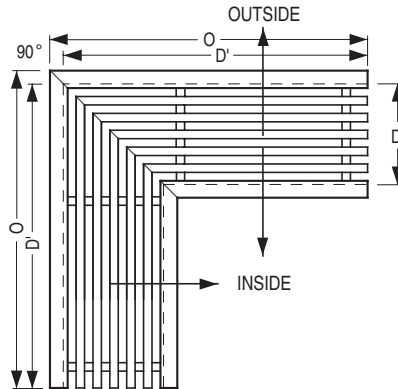


MITERED CORNER SECTIONS:

- 49-240MC** 1/2" (13) spacing, 1/4" (6) bars, 0° defl.
- 49-241MC** 1/2" (13) spacing, 1/4" (6) bars, 15° defl.
- 49-243MC** 1/2" (13) spacing, 1/4" (6) bars, 30° defl.
- 49-280MC** 1/2" (13) spacing, 1/8" (3) bars, 0° defl.
- 49-281MC** 1/2" (13) spacing, 1/8" (3) bars, 15° defl.
- 49-480MC** 1/4" (6) spacing, 1/8" (3) bars, 0° defl.
- 49-481MC** 1/4" (6) spacing, 1/8" (3) bars, 15° defl.

Factory welded with precision to match and align with the associated straight leg.
 Standard mitered corner section for floor, ceiling or wall is 90°. Other angles are available.


SPECIAL MITERED CORNERS:

-
- Other Angle**
- _____ .

*Available from 45 – 179° as SPL.

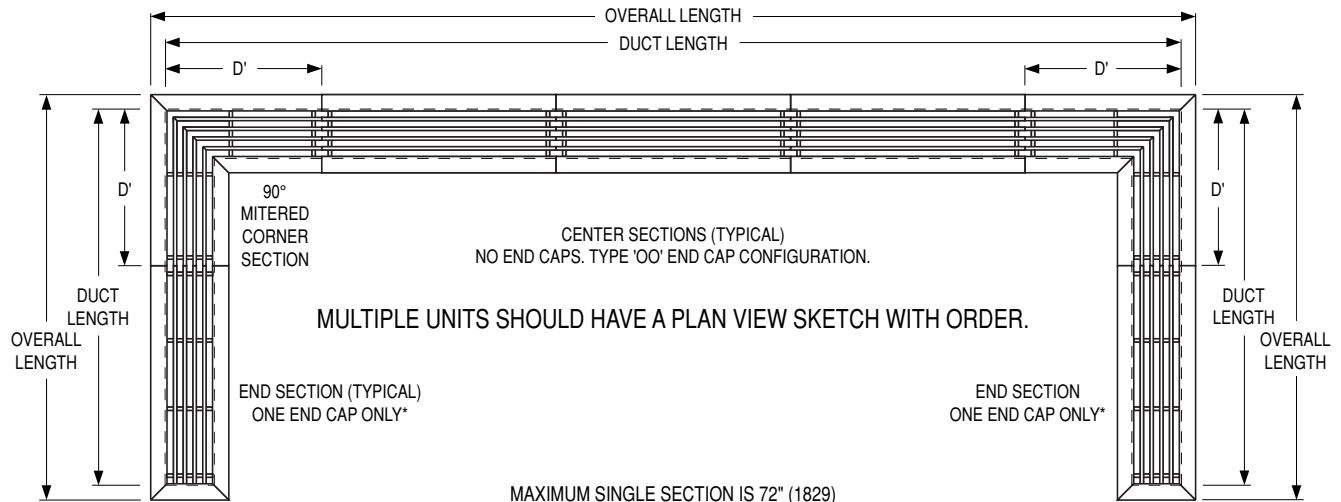
(A detailed sketch is required for co-ordination with installing contractors).

Floor, Ceiling or Sill

- Type FO** • 0° deflection
- Type FA** • Deflection inside
- Type FB** • Deflection outside

90° Mitered Corner Dimension 'O'

Duct Width D	Duct Length D'	Frame Type							
		A, D	B	C	E	F	G	H	K
1 1/2" – 4"	12"	12 3/4" (324)	12 1/2" (318)	13 1/16" (332)	12 1/4" (311)	12 13/16" (325)	12" (305)	12 9/16" (319)	12 3/4" (324)
4 1/2" – 12"	18"	18 3/4" (476)	18 1/2" (470)	19 1/16" (484)	18 1/4" (464)	18 13/16" (478)	18" (457)	18 9/16" (471)	18 3/4" (476)

CONTINUOUS RUN DIMENSIONS


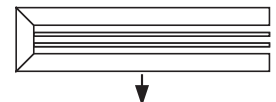
* End sections with single end caps and deflecting cores must be specified and ordered with the desired core deflection direction.

END CAP CONFIGURATIONS (mitered end cap one end and open opposite end):

-
- Type 'MO'**
- = 0° deflection

-
- Type 'MU'**
- = 15° or 30°

-
- Type 'MD'**
- = 15° or 30°


SCHEDULE TYPE:
PROJECT:
ENGINEER:
CONTRACTOR:

Dimensions are in inches (mm).

DATE	B SERIES	SUPERSEDES	DRAWING NO.
11 - 12 - 18	4900	3 - 1 - 16	4900-3B