

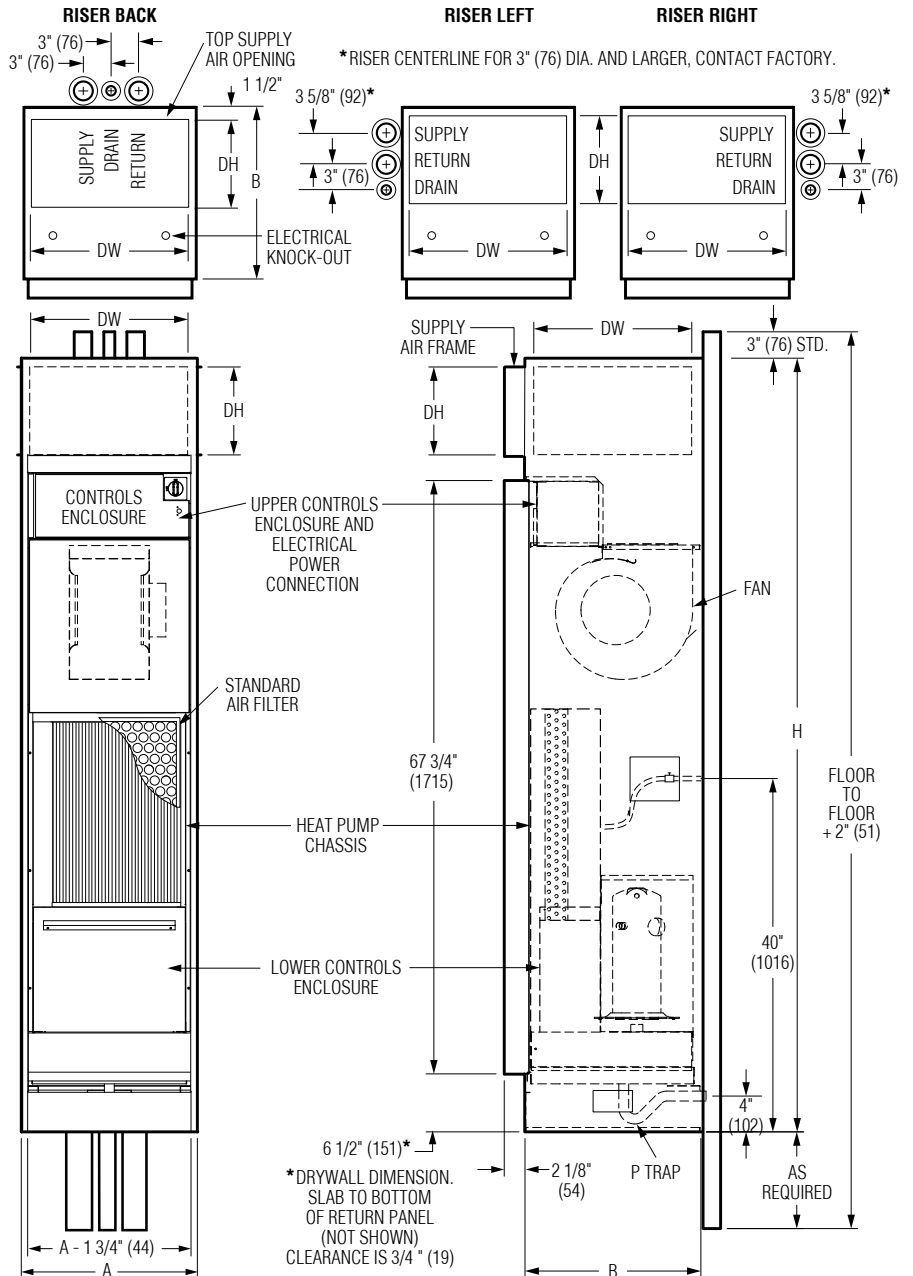
- Concealed** (Stand-alone) (default)
- M Master**
- S Slave**

### CABINET OPTIONS:

- SSS Standard**  
(Chassis ships separately) (default)
- SWC Standard**  
(Shipped with Chassis)

### STANDARD FEATURES:

- 20 ga. (1.0) galvanized steel casing.
- Removable chassis allows staged installation and ease of maintenance.
- ECM Ultra-high efficiency fan motor with overload protection.
- High-efficiency rotary & scroll compressors.
- Stainless steel braided hose kits for connection from piping risers to chassis.
- TXV metering device.
- 1/2" (13) dual density insulation, exposed edges coated to prevent air erosion.
- 1" (25) throwaway filter.
- Stainless steel insulated drain pans.
- Factory installed P-Trap.
- Integrated drain pan with condensate overflow sensor.
- Multiple supply air discharge options, factory or field configurable.
- Unique double isolation compressor mounting for quiet operation.
- Front return panel with AW Appliance White powder coat finish.
- Exceeds ASHRAE 90.1 efficiencies.



### Dimensional Data

Unit Size	Footprint A x B	Supply Grille Nominal DW x DH	Cabinet SSS/SWC H	Filter Size
9, 12	17 x 17 (432 x 432)	15 x 10 (281 x 254)	88 (2236)	14 x 24 (356 x 610)
15, 18	20 x 20 (508 x 508)	18 x 10 (457 x 254)		16 x 25 (406 x 635)
24	24 x 24 (610 x 610)	22 x 10 (559 x 254)		20 x 25 (508 x 635)
30, 36	24 x 24 (610 x 610)	22 x 10 (559 x 254)		20 x 30 (508 x 762)



**SCHEDULE TYPE:**

**PROJECT:**

**ENGINEER:**

**CONTRACTOR:**

Page 1 of 2.  
Dimensions are in inches (mm).

DATE	B SERIES	SUPERSEDES	DRAWING NO.
1 - 4 - 23	44	8 - 31 - 22	44VH-1



**SERENITY VERTICAL STACK WATER SOURCE  
HEAT PUMP WITH ECM MOTOR  
CONCEALED, MASTER AND SLAVE  
MODEL SERIES: 44VH • UNIT SIZES 9 – 36**

**GENERAL INFORMATION**

Unit Size	CFM	GPM	Cooling		Heating		Compressor		Charge (oz)
			Capacity (btuh)	EER	Capacity (btuh)	COP	Qty.	Type	
9	300	3.00	10,000	15.8	12,000	5.2	1	Rotary	30.0
12	400	3.50	12,400	15.7	14,500	5.1	1	Rotary	34.0
15	500	4.50	15,500	16.3	17,400	5.3	1	Rotary	36.0
18	625	5.50	18,500	16.0	21,000	5.0	1	Scroll	41.5
24	800	7.00	25,400	16.1	28,500	5.0	1	Scroll	63.0
30	1000	8.00	31,200	16.0	33,600	4.9	1	Scroll	70.0
36	1200	9.00	36,000	15.9	40,200	4.8	1	Scroll	74.0

**ELECTRICAL DATA**

Unit Size	Voltage	Horsepower - RPM	Blower FLA	Compressor RLA / LRA	Total FLA	MCA	Breaker Size
9	208 / 1	1/4-1600	1.1	3.7 / 29.0	4.8	5.8	15
	265 / 1	1/4-1600	1.0	3.5 / 22.0	4.5	5.4	15
12	208 / 1	1/4-1600	1.4	4.7 / 25.0	6.1	7.6	15
	265 / 1	1/4-1600	1.2	4.2 / 22.0	5.4	6.5	15
15	208 / 1	1/3-1075	1.8	5.6 / 22.0	7.4	8.8	15
	265 / 1	1/3-1075	1.6	5.0 / 28.0	6.6	7.9	15
18	208 / 1	1/3-1075	1.8	9.0 / 47.5	10.8	13.1	20
	265 / 1	1/3-1075	1.6	7.3 / 43.0	8.7	10.5	15
24	208 / 1	1/3-1075	2.4	10.9 / 62.9	13.3	16.1	25
	265 / 1	1/3-1075	2.1	9.0 / 54.0	11.1	13.4	20
30	208 / 1	1/3-1075	3.2	13.5 / 75.5	16.7	20.1	30
	265 / 1	1/3-1075	2.9	11.2 / 60.0	14.1	16.5	25
36	208 / 1	1/2-1075	3.7	14.1 / 72.2	17.8	21.4	30
	265 / 1	1/2-1075	3.3	12.2 / 72.0	15.5	18.6	30

**OPTIONS:**

- 1" (25) MERV 8 pleated filter.
- 2" (51) MERV 8 pleated filter.
- Plaque return panel with optional finishes.
- Full riser chase.
- Factory mounted risers.
- Stainless steel drain pans.
- Toggle disconnect switch.
- Door interlocking type disconnect switch.

- Cabinet stand.
- Tamper proof fasteners.
- Condensate pump.
- Insulated heat exchanger.
- Outside air damper (See submittal 44VH-2).
- Thermostat/Controls (by Engineered Comfort).
- Special features: \_\_\_\_\_

**Voltage:**

- Single phase, 60 Hz.
- 208V/230V
- 265V

**NOTES:**

1. Wiring from electrical entry knock-out to controls enclosure is furnished and field installed by others.
2. Risers available from 3/4" (19) to 3" (76) dia..
3. Max. riser length is 120" (3048), 100" (2540) min.
4. Back riser location shown.
5. For indoor use only.

<b>SCHEDULE TYPE:</b>		Page 2 of 2.			
<b>PROJECT:</b>		Dimensions are in inches (mm).			
<b>ENGINEER:</b>	<b>DATE</b>	<b>B SERIES</b>	<b>SUPERSEDES</b>	<b>DRAWING NO.</b>	
<b>CONTRACTOR:</b>	1 - 4 - 23	44	8 - 31 - 22	44VH-1	