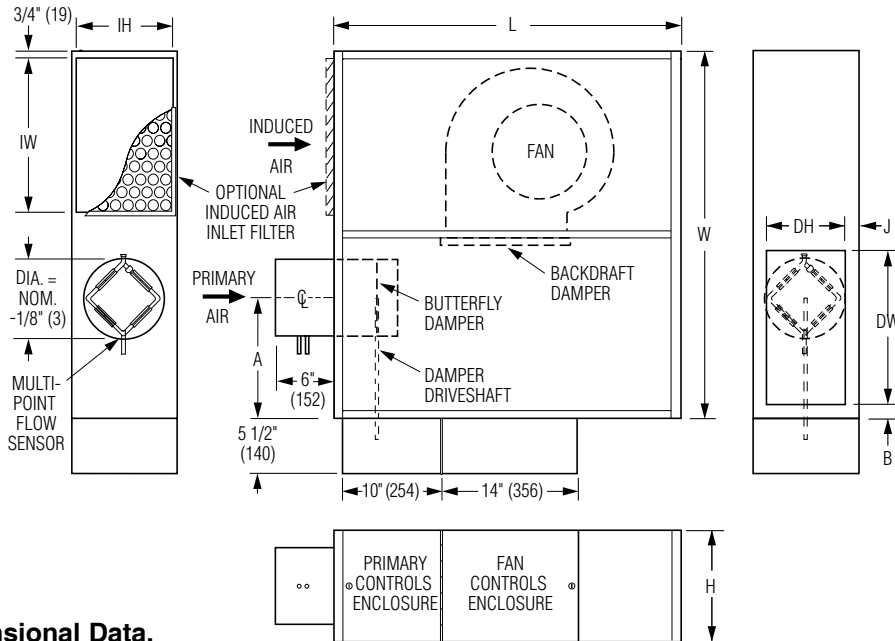




**LOW PROFILE FAN POWERED TERMINAL UNIT
WITH ECM MOTOR
PARALLEL FLOW • VARIABLE VOLUME
MODELS: 37N, 37NW AND 37NE • UNIT SIZES 2, 3 & 4**

Right Hand Unit, top view illustrated.



Dimensional Data.

Unit Size	Inlet Size	W	L	H	A	Induced Air Inlet IW x IH	Outlet Discharge DW x DH	B	J	Filter (Optional) Size
2	6 (152), 8 (203) 10 (254)	32 (813)	36 (914)	11 (279)	7 7/8 (200) 6 1/2 (165)	12 x 10 (305 x 254)	10 x 8 (254 x 203)	1 1/2 (38)	1 1/2 (38)	14 x 11 (356 x 279)
3	8 (203), 10 (254) 14 x 8 (356 x 203)	38 (965)	36 (914)	11 (279)	12 (305) 8 1/8 (206)	16 x 10 (406 x 254)	16 x 8 (406 x 203)	1 1/2 (38)	1 1/2 (38)	18 x 11 (457 x 279)
4	14 x 8 (356 x 203) 14 x 10 (356 x 254)	43 (1092)	36 (914)	12 1/2 (318)	13 (330)	19 x 10 (483 x 254)	19 x 11 (483 x 279)	1 (25)	3/4 (19)	21 x 11 (533 x 279)

DESCRIPTION:

- Only 11" (279) to 12 1/2" (318) high.
- 20 ga. (1.0) galvanized steel construction.
- 2 x 20 ga. (1.0) round or rectangular damper with a polyurethane peripheral gasket. 90° rotation, CW to close. Tight shut-off. Damper leakage is less than 2% of the terminal rated airflow at 3" w.g. (750 pa.) as tested in accordance with ANSI / ASHRAE Standard 130.
- Multi-point averaging Diamond Flow sensor.
- Access panels top and bottom.
- Ultra-high efficiency ECM fan motor. EPIC fan volume controller.
- 1/2" (13) dual density insulation, exposed edges coated to prevent air erosion. Meets requirements of NFPA 90A and UL 181.

- Single point electrical and/or pneumatic main air connection.
- Discharge opening for flanged duct connection.
- Gasketed backdraft damper mounted on fan discharge.
- Full primary air valve low voltage NEMA 1 type enclosure for factory mounted DDC and analog electronic controls.
- Controls mounted as standard on RH side as shown (Right Hand unit). Terminals ordered with LH controls (optional) are built as mirror image (Left Hand unit). Inlets and discharge are opposite of drawing.

Options:

- Filter frame and 1" (25) disposable filter.
- Induced air attenuator.
- Toggle disconnect switch.

Electrical Data

Unit Size	Motor H.P.	ECM MOTOR FLA†			
		120V	208V	240V	277V
2	*	2.1	1.5	1.5	1.4
3	*	4.2	2.5	2.6	2.6
4	*	5.1	3.7	3.7	3.8

* The ECM is a variable horsepower motor. Refer to Selectworks Schedule.
FLA = Full load amperage
† EON motor series

- Steri-liner.
- Fiber-free liner.
- Solid metal liner.
- Perforated metal liner.
- Fan unit fusing.
- Hanger brackets.
- Left-hand controls location.
- Dust tight enclosure seal.
- Special features

Page 1 of 2.

For heat options; see page 2.
Dimensions are in inches (mm).

SCHEDULE TYPE:				
PROJECT:				
ENGINEER:	DATE	B SERIES	SUPERSEDES	DRAWING NO.
CONTRACTOR:	6 - 7 - 22	3700	3 - 24 - 17	37N-2



**LOW PROFILE FAN POWERED TERMINAL UNIT
WITH ECM MOTOR
PARALLEL FLOW • VARIABLE VOLUME
MODELS: 37N, 37NW AND 37NE • UNIT SIZES 2, 3 & 4**

**Hot Water Coil Section
Model 37NW**

Standard Features:

- 1/2" (13) copper tubes.
- Aluminum ripple fins.
- Sweat connections: 1/2" (13) O. D. male solder. Two row 7/8" (22) O.D. male solder.

Coil Rows:

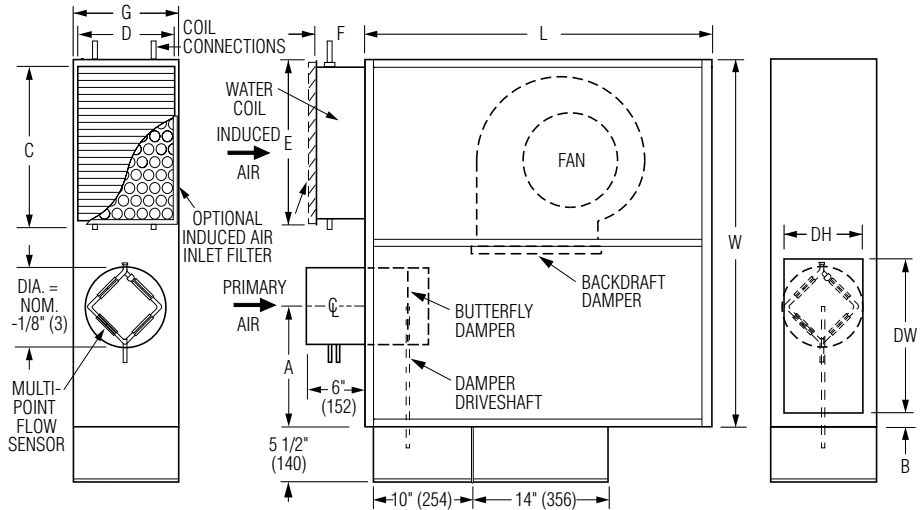
- 1-Row 2-Row

Coil Hand Connections:

(Looking in direction of airflow).

- Left hand (illustrated). Standard.
- Right hand (terminals are inverted. Built as mirror image) Optional.

Connections must be selected opposite hand to controls enclosure location.



Unit Size	W	L	H	B	C x D	E	F	G	DW x DH
2	32 (813)	36 (914)	11 (279)	1 1/2 (38)	12 x 10 (305 x 254)	13 (330)	5 (127)	11 (279)	10 x 8 (254 x 203)
3	38 (965)	36 (914)	11 (279)	1 1/2 (38)	16 x 10 (406 x 254)	17 (432)	5 (127)	11 (279)	16 x 8 (406 x 203)
4	43 (1092)	36 (914)	12 1/2 (318)	1 (25)	21 x 10 (533 x 254)	22 (559)	5 (127)	11 (279)	19 x 11 (483 x 279)

**Electric Coil Section
Model 37NE**

Standard Features:

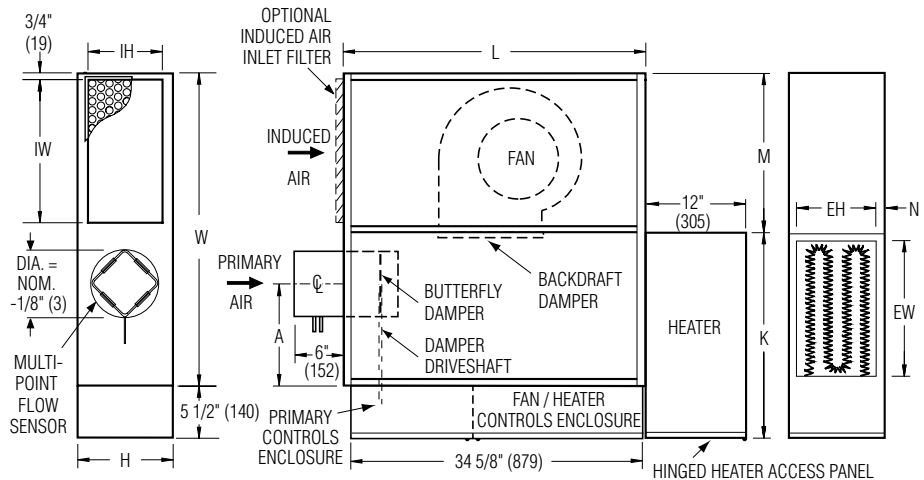
- Unique hinged heater design permits easy access, removal and replacement of heater element without disturbing ductwork.
- Coil installed on unit discharge.
- Insulated coil element wrapper.
- Automatic reset high limit cut-outs (one per element).
- Single point electrical connection (except 600V).
- Positive pressure airflow switch.
- Flanged outlet duct connection.
- Class A 80/20 Ni/Cr wire.
- Magnetic contactors per stage.
- Terminal unit with coil is ETL Listed as an assembly.
- Controls mounted as standard on RH side as shown. Terminals ordered with LH controls (optional) are built as mirror image.

Voltage:

- Single phase, 60 Hz.
 - 120V 208V 240V 277V
- Three phase, 60 Hz.
 - 208V 480V (4 wire wye)
 - 600V (Dual point connection)

Options:

- SCR Control.
- SCR Control with discharge temperature control.
- Toggle disconnect switch (includes fan).
- Door interlock disconnect switch.
- Mercury contactors.
- Power circuit fusing.
- Dust tight construction.
- Manual reset secondary thermal cut out.



Unit Size	W	L	H	IW x IH	K	M	N	EW x EH
2	32 (813)	36 (914)	11 (279)	12 x 10 (305 x 254)	18 1/2 (470)	19 (483)	1 1/2 (38)	10 1/2 x 9 (267 x 229)
3	38 (965)	36 (914)	11 (279)	16 x 10 (406 x 254)	24 1/2 (622)	19 (483)	1 1/2 (38)	16 1/2 x 9 (419 x 229)
4	43 (1092)	36 (914)	12 1/2 (318)	19 x 10 (483 x 254)	27 (686)	22 (559)	3/4 (19)	19 x 10 1/2 (483 x 267)

SCHEDULE TYPE:

PROJECT:

ENGINEER:

CONTRACTOR:

Page 2 of 2.
Dimensions are in inches (mm).

DATE	B SERIES	SUPERSEDES	DRAWING NO.
6 - 7 - 22	3700	3 - 24 - 17	37N-2