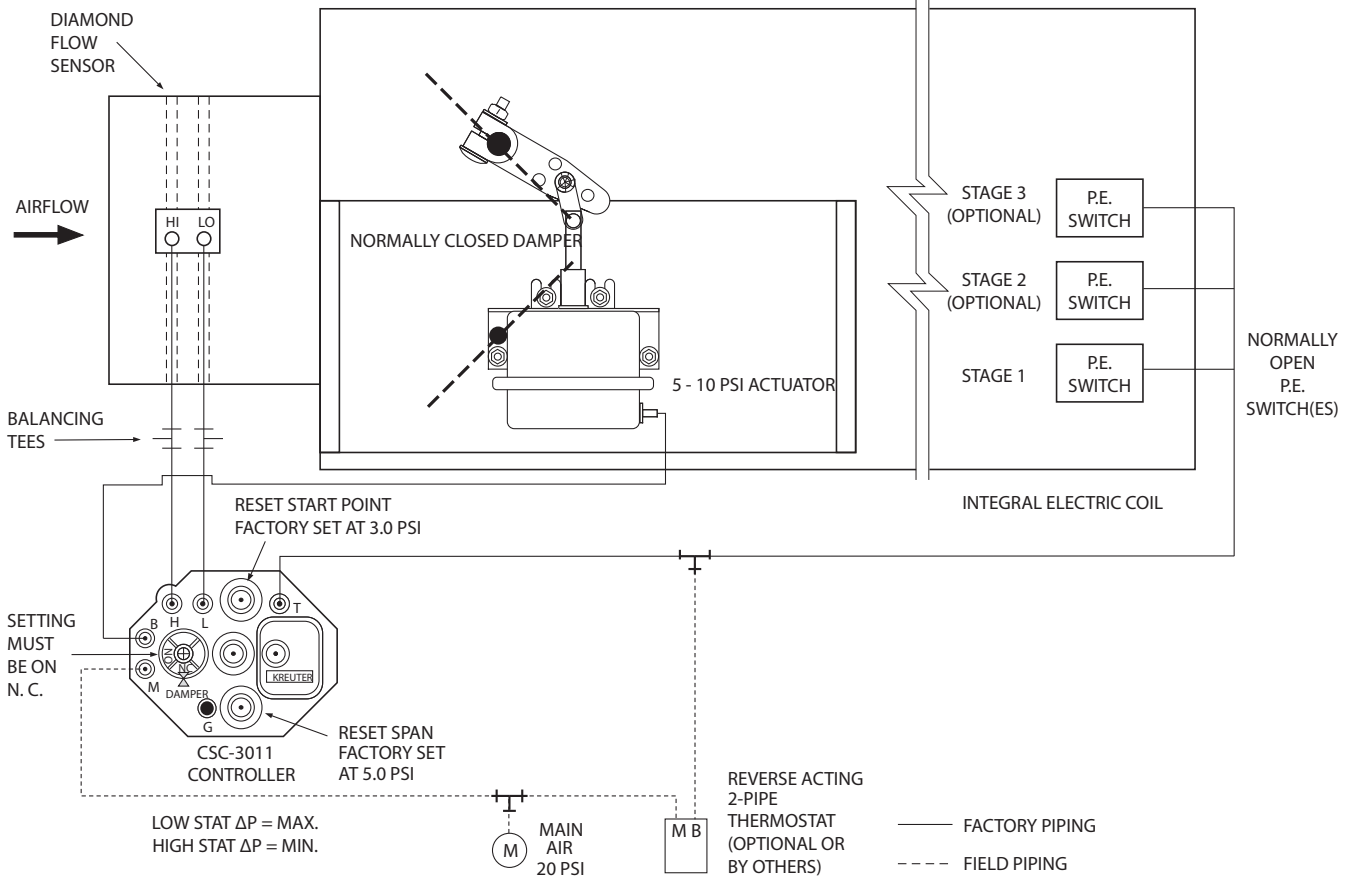




**PNEUMATIC CONTROLS
SINGLE DUCT VAV TERMINAL UNIT
MODEL: 30RE
CONTROL SEQUENCE: 4P3 (CSC-3011)**



**COOLING WITH ELECTRIC REHEAT • REVERSE ACTING,
NORMALLY CLOSED • VARIABLE AIR VOLUME • PRESSURE
INDEPENDENT**

Sequence of Operation:

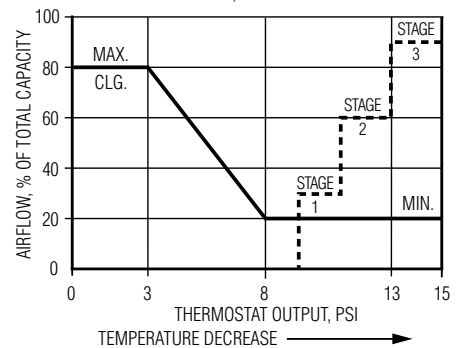
1. When main control air is off, damper is closed and P.E. switch for electric heater is open (de-energized).
2. Main control air on - controller is activated. Begins modulating cold airflow according to thermostat demand.
3. Decrease in room temperature increases thermostat output pressure (thus decreasing airflow).
4. Maximum airflow is maintained between 0 and 3 psi thermostat signal.
5. Further decrease in room temperature will increase thermostat output pressure from 3 to 8 psi which will decrease airflow to room. At 8 psi and above, minimum airflow is maintained.
6. A further decrease in room temperature will energize the electric reheat coil one stage at a time.
7. If main control air fails, damper fails closed and P.E. switch for electric heater fails open (de-energized).

Options:

Two Pipe Thermostat (Vertical Mount. Includes backing plate for 2" x 4" electrical box).

- CTC-1622-103 °F scale plate
- CTC-1622-113 °C scale plate

VAV COOLING, ELECTRIC REHEAT
REVERSE ACTING THERMOSTAT, NORMALLY CLOSED DAMPER



SCHEDULE TYPE:			
PROJECT:			
ENGINEER:			
CONTRACTOR:			
DATE	B SERIES	SUPERSEDES	DRAWING NO.
12 - 10 - 13	3000	10 - 18 - 07	30RECD-4P3