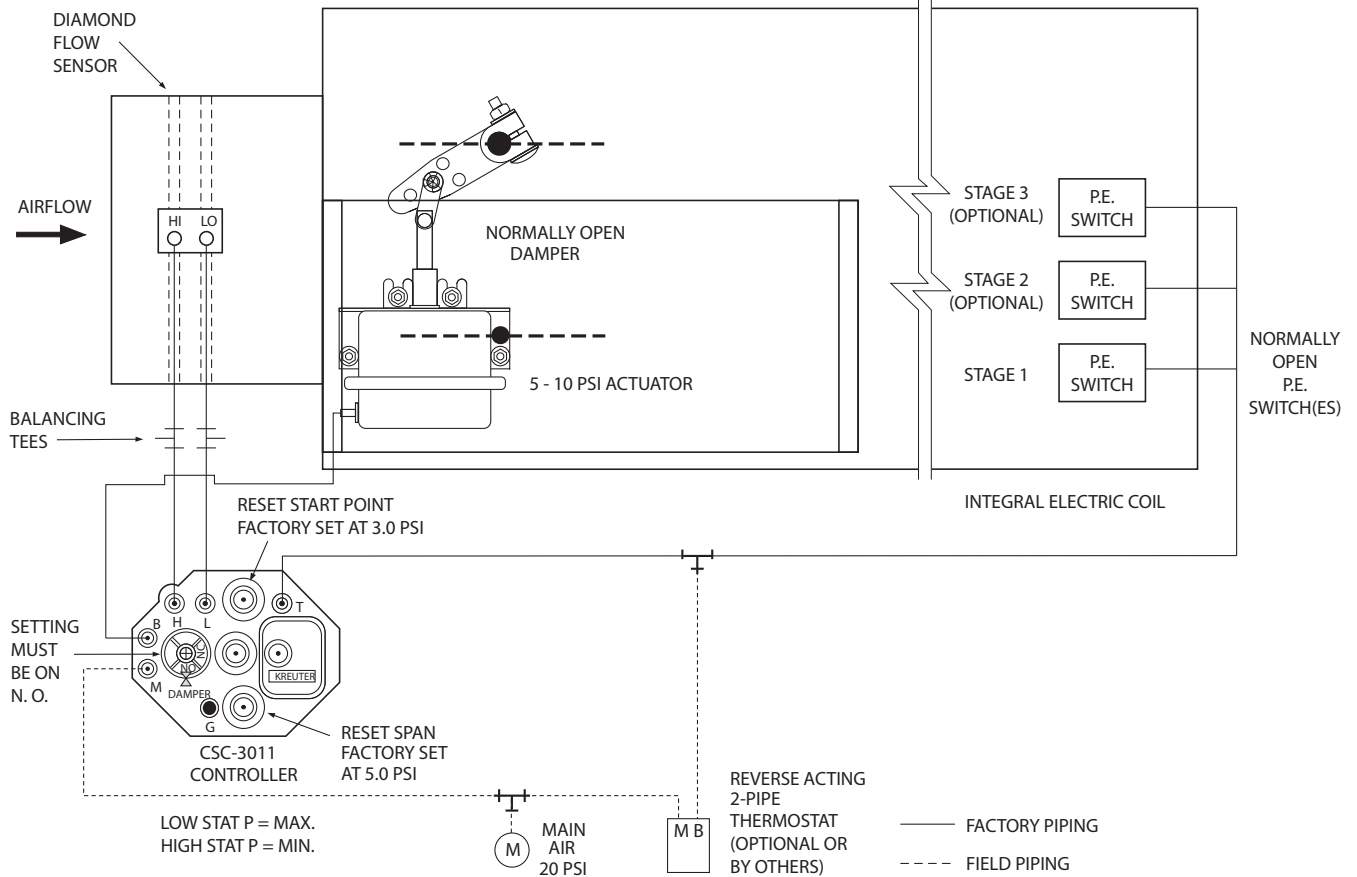




**PNEUMATIC CONTROLS
SINGLE DUCT VAV TERMINAL UNIT
MODEL: 30RE
CONTROL SEQUENCE: 2P3 (CSC-3011)**



**COOLING WITH ELECTRIC REHEAT • REVERSE ACTING,
NORMALLY OPEN • VARIABLE AIR VOLUME • PRESSURE
INDEPENDENT**

Sequence of Operation:

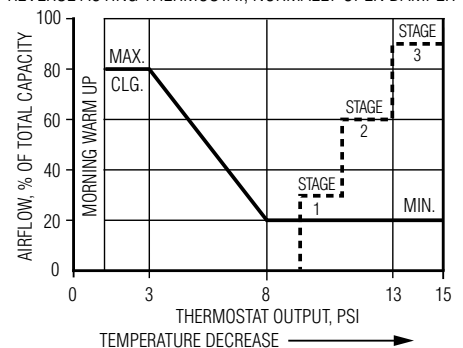
1. When main control air is off, damper is fully open and P.E. switch for electric heater is open (de-energized). Morning warm-up setting (if required) with warm air from the system supplied at full flow rate.
2. Main control air on - controller is activated. Begins modulating cold airflow according to thermostat output.
3. Decrease in room temperature increases thermostat output pressure (thus decreasing airflow).
4. Maximum airflow is maintained between 0 and 3 psi thermostat signal.
5. Further decrease in room temperature will increase thermostat signal from 3 to 8 psi which will decrease airflow to room. At 8 psi and above, minimum airflow is maintained.
6. A further decrease in room temperature will energize the electric reheat coil one stage at a time.
7. If main control air fails, damper fails open and P.E. switch for electric heater fails open (de-energized).

Options:

Two Pipe Thermostat (Vertical Mount. Includes backing plate for 2" x 4" electrical box).

- CTC-1622-103 °F scale plate
- CTC-1622-113 °C scale plate

**VAV COOLING, ELECTRIC REHEAT
REVERSE ACTING THERMOSTAT, NORMALLY OPEN DAMPER**



SCHEDULE TYPE:				
PROJECT:				
ENGINEER:		DATE	B SERIES	SUPERSEDES
CONTRACTOR:		12 - 10 - 13	3000	4 - 19 - 01
				DRAWING NO.
				30RECD-2P3