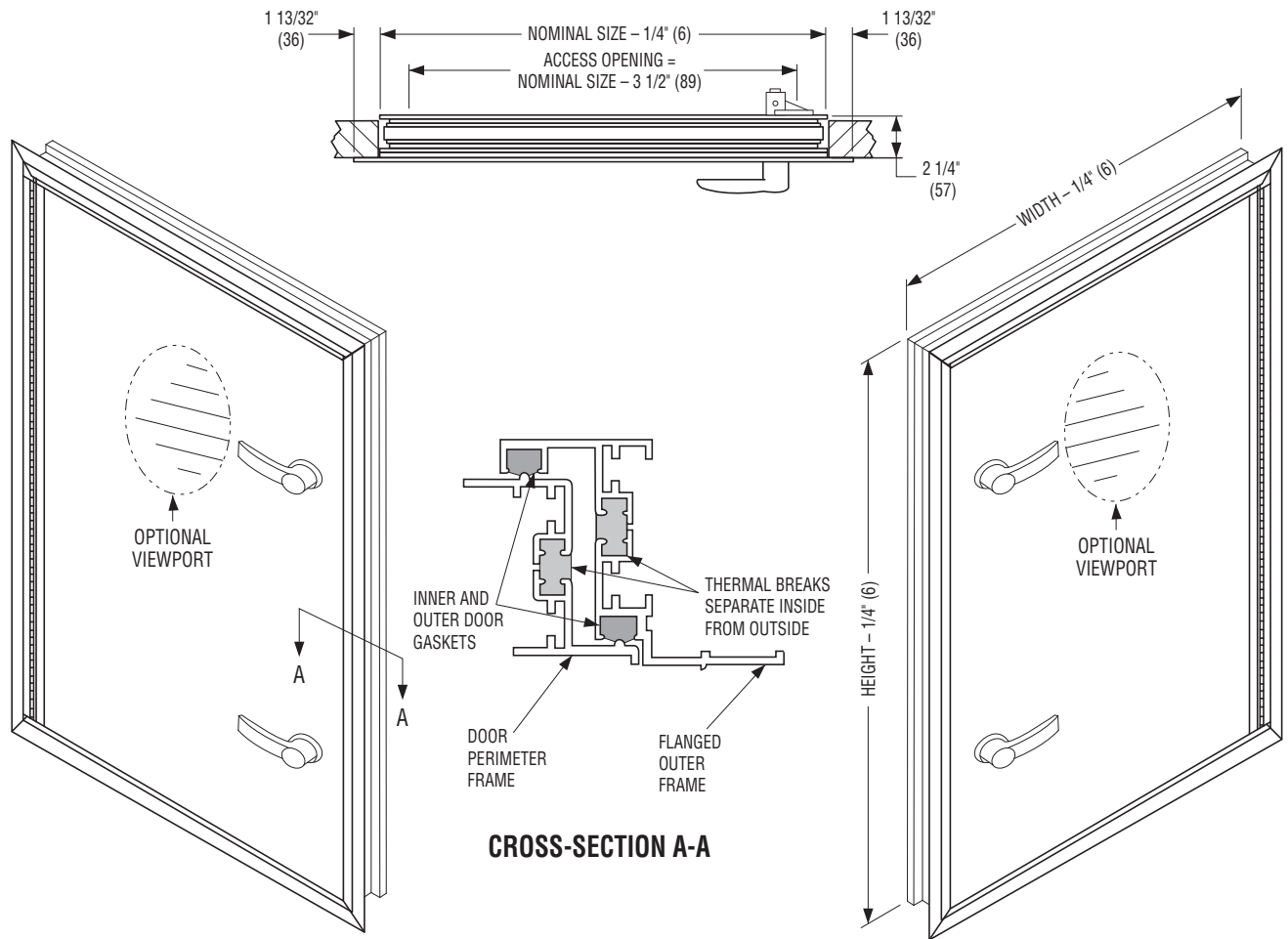




**THERMAL BREAK PLENUM ACCESS DOOR
OUT-SWING FRAME (NEGATIVE PRESSURE)
EXTRUDED ALUMINUM FRAMES
STEEL DOOR PANELS • 2" (51) DEEP DESIGN
MODEL SERIES: 0850-2**



MODEL 0850-2L
LEFT HAND HINGE

MODEL 0850-2R
RIGHT HAND HINGE

MODEL DESCRIPTION:

Ultra-low leakage, premium quality and performance access door designed for out-swing (negative pressure) applications. Extruded aluminum frames feature attractive mitered corner construction. Thermal break door and frame design utilizes pour-and-debridging technology to achieve levels of thermal isolation unsurpassed by other methods. Double door gaskets assure low levels of leakage. Ergonomic adjustable door latches have cam-locking surfaces for smooth operation and positive seal. All units have full length stainless steel piano type hinges, for left hand or right hand operation. A standard 3 lb. density insulation is used between the 20 ga. (1.0) galvanized steel inner and outer door panels.

NOTES:

1. Minimum size is 12" x 12" (305 x 305).
2. Maximum size is 48" x 96" (1219 x 2438).
3. Fractional sizes are available.
4. Custom sizes available. Contact factory.

DOOR HANDLES:

- DH0** None, prep only.
- DH2** 2 per door (recommended minimum for door heights under 60" [1524]).
- DH3** 3 per door (recommended minimum for door heights 60" [1524] thru 80" [2032]).
- DH4** 4 per door (recommended minimum for door heights over 80" [2032]).

OPTIONAL VIEWPORTS:

Dual pane hermetically sealed lexan view glass window.

- VP8** 8" (203) round (min. door size 18" x 18" [457 x 457]).
- VP12** 12" (305) round (min. door size 24" x 24" [610 x 610]).

Dimensions are in inches (mm).

SCHEDULE TYPE:			
PROJECT:			
ENGINEER:			
CONTRACTOR:			
DATE	B SERIES	SUPERSEDES	DRAWING NO.
8 - 17 - 11	0800	3 - 10 - 08	0850-1