

FAN COIL UNITS

PRODUCT OVERVIEW



TABLE OF CONTENTS

	Page No.
Vertical Fan Coil Units	
41V Series	3
42V Series	3
39VH Series • Vertical Hi-Rise Units	4
Type C Concealed Unit	4
Type E Exposed Unit	5
Type M/S Master Slave Unit	5
Type A/B Paired Unit	5
39L Series • Low Profile Vertical Hi-Rise Units	6
39MU Series • Low Boy Vertical Hideaway Unit	6
Horizontal Fan Coil Units	
35FH Series • High Capacity Hideaway Horizontal Units	7
37FH Series • Low Profile Hideaway Horizontal Units	7
40H Series • Low Profile Horizontal Units	8
• Free Return	8
• With Plenum	8
• Telescoping	8
• Exposed	8
Accessories	
Outside Air (IAQ) Inlet Dampers	9
Motors	9
Electronic Controls	10
T1070 Series Thermostat	10
Direct Digital Controls	11
Valve Package	11
2-Way, 2-Position Control Valve/Actuator	11
3-Way, 2-Position Control Valve/Actuator	12
2-Way and 3-Way Modulating Control Valve/Actuator	12
Representative Valve Package Components	12
Filters	13
Electric Heat	13
Testing • Certification	14
Product Spotlight • EZstat	15

WFCPL (5.18)

Copyright ©2018 by Nailor Industries Inc. All rights reserved. No part of this catalog may be reproduced or transmitted in any form or by any means, electronic or mechanical, including photocopying and recording, or by any information storage and retrieval system without permission in writing from Nailor Industries Inc.

In this catalog the terms of "Engineered Comfort", "Nailor Industries Inc.", "Nailor", "Nailor Industries" or "Nailor International Group" are synonymous and may be interchangeable for context or clarity.

Nailor Industries Inc. pursues a policy of continuous product development and we therefore reserve the right to change any of the information in this publication without notice.

Contact your Nailor representative to verify current product details.

VERTICAL FAN COIL UNITS

PRODUCT HIGHLIGHTS

41V SERIES VERTICAL FLOOR FAN COIL UNITS

The 41V Series Vertical Floor units (often called sill units) are ideal for use in hospitality, condominiums and an excellent retrofit choice; the 41V Series are available in a concealed and exposed chassis.

Features:

- 3-speed ECM and 3-speed PSC.
- Two or four pipe hydronic connections.
- Electric heat.
- MERV 8 pleated filter option.
- Airflow ranges from 200 – 1200 cfm (94 – 566 l/s)
- Factory supplied piping packages.

Concealed Model: 41VC

- Discharge flange for grille or ducted connections.
- Slim profile design; less than 10" (254) deep in most cases.
- Easily accessible internal components.
- Optional decorative wall panel.



Model 41VC – Concealed Unit

Exposed Models: 41VS and 41VX

- Constructed of heavy gauge steel.
- One-piece front panel assembly provides easy access to internal components.
- Supply air is delivered through a stamped face louvered grille (41VX only); double deflection and linear bar grilles (Standard on 41VS) are optional.
- Assortment of fasteners, including 1/4 turn or tamper-proof available.
- Woodgrain finishes are available.



Model 41VS – Vertical Exposed Sloped Top Cabinet with Woodgrain (Rustic Cherry) finish

Model 41VX – Vertical Exposed Flat Top Cabinet

42V SERIES LOW PROFILE VERTICAL FLOOR MOUNT UNITS

The 42V Low Profile Vertical Floor Mount Series fan coil unit is designed for exposed or concealed under-window applications. The low-profile design of the unit does not interfere with vision through the window, obstruct light or detract from the aesthetics of the room.

Features:

- Airflow ranges from 200 – 600 cfm (94 – 283 l/s).
- Design flexibility to accommodate historic and existing building space constraints and room designs.
- Provided with an attractive powder-coat paint finish (42VX).
- Ideal for low window sill height applications.
- Woodgrain finishes available (42VX).



Model 42VX – Low Profile Vertical Floor Mount with Woodgrain (Mahogany) finish

VERTICAL FAN COIL UNITS

39VH SERIES • VERTICAL HI-RISE UNITS

Designed as a modular unit with integral risers to allow units to be "stacked" one on top of the other in a vertical column rising floor to floor up the building. This allows the use of one set of common risers, significantly reducing the installed cost compared to other fan coil systems.

Product Highlights

- 200 – 2100 cfm (94 – 991 l/s). The largest range in the industry.
- Standard 88" (2235) high unit design.
- Available in any of the following configurations: Concealed, Exposed, Master/Slave and A/B paired. See following sections for more information on these configurations.
- High efficiency 3-speed PSC and 3-speed ECM motors available in nine unit sizes. i.e. nine motor/blower combinations in four footprint sizes.
- Ultra-high efficiency EPIC ECM motor available in four unit sizes.
- Industry leading Variable Air Volume (VAV) EPIC Fan Technology® available with ECM motor for performance leading energy savings, quietness and comfort.
- Up to five rows of cooling/heating coils are available.
- Risers (where provided) are factory installed as standard but may be optionally shipped loose upfront to facilitate field installation.
- UV light option.
- Primary applications include hotels, condominiums and apartment buildings.
- Slim Profile Vertical Stack Units available, ideal for retrofit applications with a 16" x 16" (406 x 406) foot print (contact factory for unit specifications).
- Woodgrain finishes are available.



Model 39VHZW Type C Cutaway



Model 39VHZ Type C with OAI (Outside Air Inlet)



Model 39VHZ Type C with optional Woodgrain finish

TYPE C CONCEALED UNIT

Designed for stand-alone concealed applications in corners or along room walls. Drywall may be directly attached or the unit framed in. After completion of the finished room walls, only the supply grille and return panel are visible.

Product Highlights

- Stand-alone concealed applications.
- In room corner or along walls.
- Units are furred-in with drywall. Only supply grille and return panel are visible.

TYPE E EXPOSED UNIT

Designed for exposed stand-alone applications on both new and on renovation projects where concealed installation is not possible or practical. Units feature an integral riser chase as standard and a full height flush mount removable face panel with supply and return grilles. An optional ceiling shroud extension is available to take the unit casing the full height of the room. The entire unit features an attractive baked enamel paint finish.

Product Highlights

- Entire unit is exposed in room.
- Cabinet is painted.
- Riser chase hides risers.
- Ceiling shroud extension available.



Model 39VHZ Type E

TYPE M/S MASTER/SLAVE UNIT (not shown)

Designed for those applications where building design prohibits the use of a Paired unit. The units are a pair but the slave is installed remote from the master. Units still share a common set of risers (supplied on the Type M Master unit when provided) but each unit is shipped separately for a field piping connection.

Product Highlights

- Concealed application.
- Each unit shipped and installed separately (remote).
- Share a common set of risers for field connection.



Models 39VHZW Type A/B Paired "Side by Side" Unit

TYPE A/B PAIRED UNIT

Designed for installation in the separation wall between two rooms. Paired units are a pair, available in a "piggyback" or "side-by-side" arrangement. They share a single set of common risers (attached to the A unit) but each has its own set of water valves and controls for independent operations. Paired units are shipped completely assembled direct from the factory for additional cost savings and are available with a UL Classified one-hour fire-rated option.

Product Highlights

- Concealed application.
- Factory assembled.
- Riser chase hides risers.



Models 39VHZW Type A/B Paired "Piggy Back" Unit

39L SERIES • LOW PROFILE VERTICAL HI-RISE UNITS

All the same design, unit sizes, features and options as the standard 39VH series model, but in a reduced height casing for easier installation where floor to floor height is restricted.

Product Highlights

- Low profile 80" (2032) high unit design.
- Available in Type C Concealed, Type A/B Paired and Type M/S Master Slave arrangements.



Model 39LZ Type C with OAI (Outside Air Inlet)



Model 39MUZ

39MU SERIES • LOW BOY VERTICAL HIDEAWAY UNIT

Design for platform or floor mounted, vertical ducted applications. Units are normally located in closets, utility rooms or other concealed locations.

Product Highlights

- 200 – 2100 cfm (94 – 991 l/s).
- Compact unit design.
- High efficiency 3-speed PSC or 3-speed ECM motors available in nine unit sizes (motor/ blower combinations in four footprint sizes).
- Ultra-high efficiency EPIC ECM motor available in four unit sizes.
- Industry leading Variable Air Volume EPIC Fan Technology® available for performance leading energy savings, quietness and comfort.
- Quick connection of water lines and drain suitable for retrofits or new construction.

HORIZONTAL FAN COIL UNITS

Draw-Through Design Benefits

- Provides better velocity profile through coil.
- Supply air contacts more of the coil face than a blow-through design.
- Better heat transfer.
- Less air pressure drop.
- Lower sound levels.

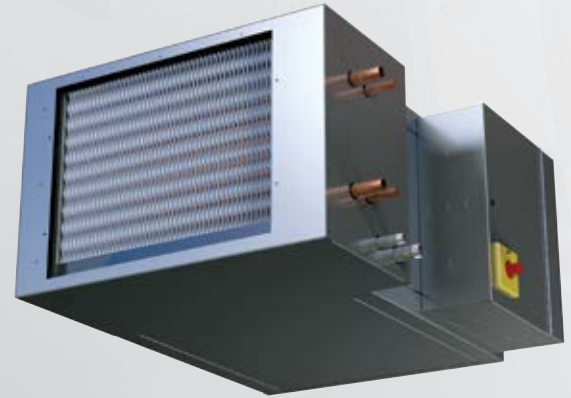
Effective Benefits

- Less air pressure drop allows for higher static and use of MERV 13 filters for LEED credits.
- Less pressure drop and better heat transfer lead to better system energy efficiency.
- EPIC ECM has wider airflow range with fewer casing sizes.

35FH SERIES • HIGH CAPACITY HIDEAWAY HORIZONTAL UNITS

A fully commercial quality unit designed for concealed ceiling applications [17" – 23" (432 – 584) high unit].

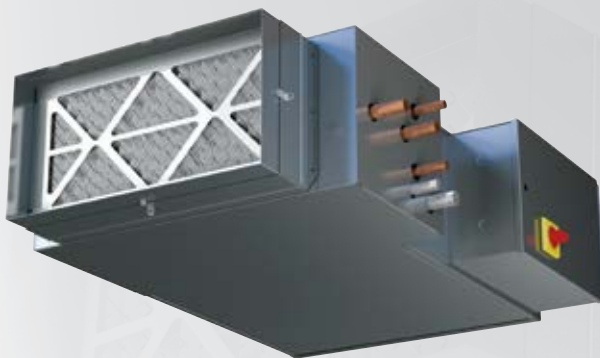
- Draw through maximizes capacity as air contacts more of the coil face area.
- Fully insulated coil casing reduces heat losses.
- Insulated casing reduces radiated sound.
- Airflow range 200 – 4000 cfm (94 – 1888 l/s) (1 – 10 tons cooling).
- 4, 6, 8, 10, 12, 14, 16, 18, 20, 24, 30 & 40 where size equals approximate max air flow.
- External Static Pressure up to 1.3" w.g. (323 Pa).
- EPIC ECM, 3-speed ECM and 3-speed PSC Motors available.
- Industry leading Variable Air Volume EPIC Fan Technology® available.
- Up to eight rows of cooling/heating coils available.
- Full panel bottom and side access to all components
- 120, 208, 240, and 277 volts on all motors.



35FHZW

37FH SERIES • LOW PROFILE HIDEAWAY HORIZONTAL UNITS

A fully commercial quality unit designed for concealed ceiling applications where a lower profile is required [11" (279) high unit].

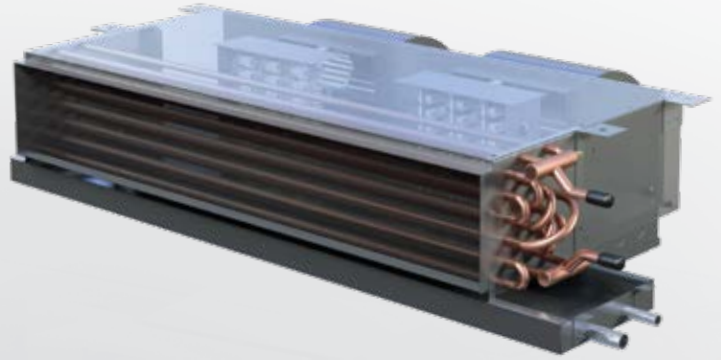


37FHW

- 90 – 1350 cfm (43 – 637 l/s) capacity in three unit sizes.
- Only 11" (279) in height for tight ceiling applications.
- Ultra-high efficiency EPIC ECM motor standard.
- Industry leading Variable Air Volume EPIC Fan Technology® available for performance leading energy savings, quietness and comfort.
- Fully isolated direct drive blower/motor assembly.
- Insulated inlet casing reduces radiated sound.
- Easy full panel access to all components.
- Sloped drain pan externally insulated.
- Up to six rows of cooling/heating coils available.
- Various IAQ linings available.
- UV light option.

MODEL 40HF • FREE RETURN

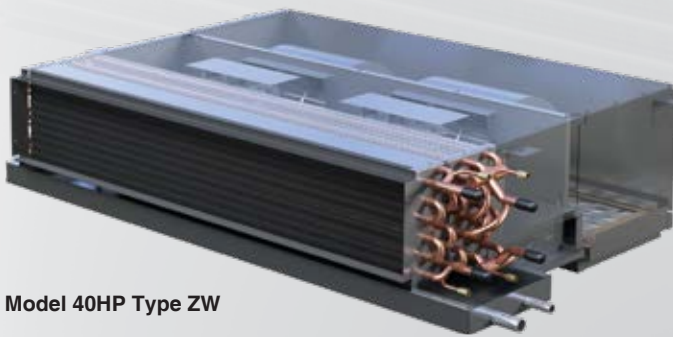
- A compact low profile [10" (254) high] design primarily for hotel, condo and apartment applications.
- 200 – 1500 cfm (94 – 708 l/s).
- Compact blow through coil design.
- Hanger brackets.
- 3-speed ECM or 3-speed PSC.
- Sloped drain pan with 7/8" (22) primary drain connection, optional 5/8" (16) secondary drain connection.
- Optional removable electric heat.
- Optional bottom mounted control enclosure with hinged door.
- Split coil design with up to six multiple coil row options.
- Air vents and drains accessible on all coils.
- 1" (25) collar allows quick field connection of duct work.



Model 40HF Type ZW

MODEL 40HP • WITH PLENUM

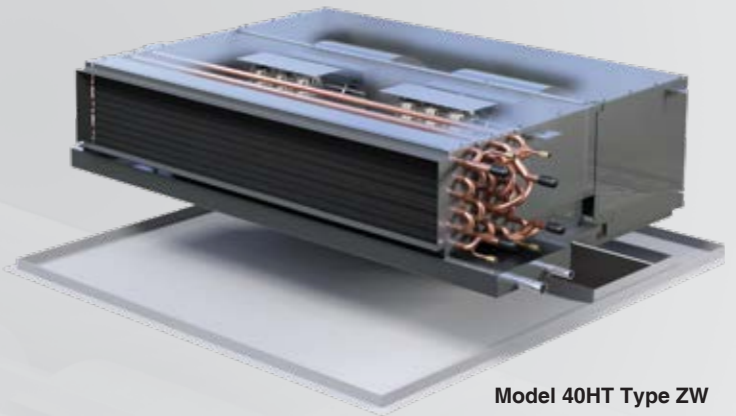
- Plenum section is fully insulated, helps reduce radiated sound.
- Plenum with rear or bottom return option with 1" (25) filter rack.
- Plenum can be field adjusted from rear to bottom return or vice versa.
- 6" (152) outside air inlets available on top, side, or rear of plenum.



Model 40HP Type ZW

MODEL 40HT • TELESCOPING RETURN

- 2" (51) of adjustment in telescopic assembly.
- Ensures return air from the space is conditioned and avoids drawing plenum air into the fan coil unit.
- Ceiling panel is hinged giving access to the entire unit.
- Adjustable telescoping assembly mates with the return air grille.



Model 40HT Type ZW

MODEL 40HX • EXPOSED CABINET

- Galvanized steel cabinet with powder coat paint finish; 12" (305) height.
- Single Blade Return Air Grille with 1" (25) filter.
- Bottom panel is hinged and removable for access to all components.
- Single or double deflection supply grille.
- 3/8" (10) diameter hanger rod holes.
- Knockouts provided for drain and electrical connections.



Model 40HX Type ZW

ACCESSORIES

OUTSIDE AIR INLET (OAI) DAMPER

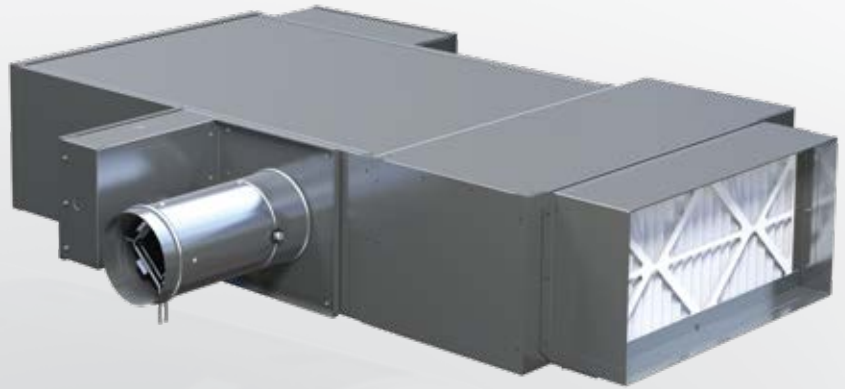
(Refer to technical catalog for model availability)

The following types of damper options are available:

1. Motorized damper with 2-position open/closed actuator 4" – 12" (102 – 305) dia. nominal.
2. Manual balancing damper 4" – 12" (102 – 305) dia. nominal.
3. Pressure independent damper with flow sensor and modulating actuator 4" – 12" (102 – 305) dia. nominal.

Notes:

Outside air location may be on the right or left side of the unit (opposite from any side riser on vertical units). Dampers are undersized 1/8" (3) for ducted connection to nominal duct.



37FHZW with EPIC ECM Motor, Optional Outside Air Inlet (OAI), Optional Controls Enclosure and Optional Ducted Filter Rack Connection

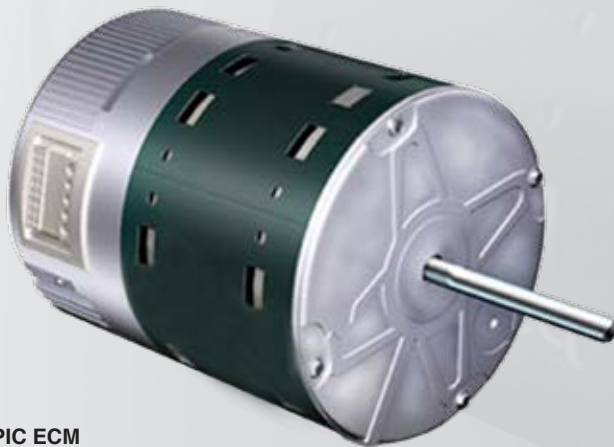
MOTORS

Depending on the Unit series, most models are available with the following motor types:

- EPIC ECM
- 3-speed ECM
- 3-speed PSC

EPIC ECM:

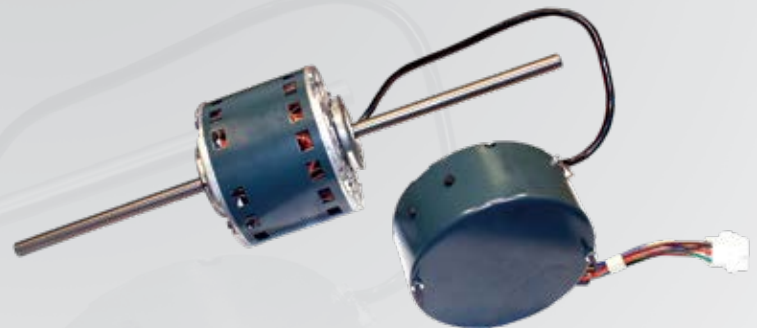
- Variable Air Volume (airflow/variable torque in response to load).
- Pressure independent operation.
- Factory set airflow.
- Ball bearings for improved lubrication and quieter operation.
- Ultra high efficiency and energy saving operation.
- Reduced operating temperature, decreases energy to offset motor heat gain.
- When paired with Engineered Comfort valve package and digital control options such as EZstat, offers functionality and flexibility not available with other commercial fan coil manufacturers.



EPIC ECM

3-speed ECM:

- 3 distinct speeds, typically H-M-L.
- Factory set airflow.
- Similar efficiencies to the EPIC ECM.
- Excellent alternative to 3-speed PSC.



3-speed ECM



3-speed PSC

3-speed PSC:

- 3 distinct speeds, typically H-M-L.
- Cost effective control options available.
- Standard 120V, 208V, 240V and 277V, single phase, 60 Hz.

ELECTRONIC CONTROLS

When your fan coil project demands a control solution centered around simplicity and value, Engineered Comfort delivers. All of Engineered Comfort's fan coils are available with industry popular controls ranging from simple on/off functionality to 7 day programmable scheduling.

Product Highlights

- Manual or automatic changeover.
- Low voltage to line voltage options (consult individual T-stat specification for availability).
- 3 discrete speed settings (select units only).
- Available fan ramping (select units only).
- LCD display with programmable setpoints (select units only).
- Fully programmable 7 day schedule with Holiday Override (select units only).



Honeywell Multi-Pro Thermostat



Engineered Comfort Programmable Thermostat

Features

- 7-day programmable models with self-prompting programming.
- Auto 2-pipe changeover with thermistor sensor.
- 24 Vac low voltage.
- Electric heat ready (1-stage).
- 3-speed fan control (ECM or PSC).
- 2 position spring return on-off water valve control.
- Dry contact equipped for remote on-off occupied/unoccupied control.
- Keypad lockout option.
- Large easy to read permanently illuminated digital display (°F or °C).

DIGITAL DISPLAY THERMOSTATS FOR 3-SPEED FAN COIL UNITS

Product Highlights

The Engineered Comfort T1070 Series Thermostat represent great value for a wide variety of two and four pipe hydronic fan coil applications. These thermostat controllers are available in both programmable and non-programmable models and are designed for standalone use in commercial buildings such as hotels and schools as well as residential condominium and apartment projects.

Models

- T1070 Non-programmable 2 or 4-pipe Normally Closed Chilled and Hot water valves
- T1075 Programmable 2 or 4-pipe Normally Closed Chilled and Hot water valves
- T1075N Programmable 4-pipe Cold Climate Normally Closed Chilled water and Normally Open Hot water valves

- Dual set point with adjustable deadband
- Red / Green LED shows heating / cooling mode
- All programming and set points stored in non-volatile memory and are never lost in power failure
- Clock chip back up allows time to stay current for up to 48 hours during power loss for programmable models.
- Configurable display can show both heating and cooling set points and room temperature simultaneously.
- Includes exact fit locking cover.
- Optional wall plate for 2" x 4" (51 x 102) or 4" x 4" (102 x 102) electrical box installation.

EZSTAT DIRECT DIGITAL CONTROLS

Model Series 35FH, 37FH, 39, 40 and 41V are now available with Engineered Comfort's newest digital control offering, the EZstat, when used with the EPIC ECM.

EZstat replaces the traditional two piece Net Sensor and separate BAC-7303C controller with a single all-in-one thermostat, and offers a unique, cost-effective combination of networking, application, and sensor options along with easy, intuitive installation, configuration, and operation. The EZstat can operate as a standalone device and/or communicate with other BACnet network and remote monitoring devices. In addition, the device contains many improvements ranging from enhanced performance, cost savings and parts consolidation.

Available Sequences

- N501: Modulating Cooling/Modulating Heating with Automatic Changeover.
- N502: Modulating Cooling/Modulating Heating with Auxiliary Staged Electric Heat.
- N503: Modulating Cooling with Staged Electric Heat.
- N505: Modulating Cooling/Modulating Heating.
- N506: Modulating Cooling with Proportional Electric Heat.
- N507: Modulating Cooling with On/Off Heat.
- N508: Proportional Electric Heat or Modulating Heating*.
- N509: Staged Electric Heat or On/Off Hot Water Heat*.
- N510: Modulating Cooling.

* Note: Sequence driven by fan coil selection.



EZstat

VALVE PACKAGES

Engineered Comfort Vertical Hi-Rise Fan Coil Units are supplied as standard with a factory supplied and installed valve/piping package for the main cooling coil and optional heating coil. This assures all components are compatible with the application and install with the physical restrictions of the cabinet for ease of maintenance and service.

Engineered Comfort horizontal fan coil units have standard valve packages available as a factory installed (with an enclosure) or "ship loose" option for field connection.

Valve packages consist of a variety of components and selection is dependent upon the application. The following section provides a cursory description of each of the components. Photos are for general representation purposes only. Vendors and models are subject to change without notice.



2-Way, 2 Position Valve/Actuator

2-WAY, 2-POSITION CONTROL VALVE/ACTUATOR

All valves are piped on the return side of the coil. The valve spring provides the necessary force to hold the stem in the raised or Normally Open (NO) position.

In the open position, water can flow through the coil to heat or cool the space. In the closed position, water cannot flow. Actuators are 2-position spring return operation. The Normally Open (NO) or Normally Closed (NC) valve position (relative to water flow through the coil) on power failure is determined by the actuator model selection. NO/NC action must be compatible with the thermostat/control package selection.

Actuator are available for line and 24 Vac low voltage applications.

- Nominal size: 1/2" (13) , 3/4" (19) or 1" (25).
- Body material: Brass.
- Pressure rating: 125 psi maximum.
- Temperature rating: 230°F maximum.
- Maximum close off pressure: 44 psi.
- Cv: 2.5 (1/2"), 4.1 (3/4"), 7.0 (1").
- Actuator power consumption: 10 VA maximum.

3-WAY, 2-POSITION CONTROL VALVE/ACTUATOR

3-Way valves are piped on the return side of the coil as mixing valves. In the open position, water can flow through the coil to heat or cool the space and the bypass port is closed. (Flow is A to AB). In the closed position, water cannot flow through the water coil and is diverted to flow through the bypass line (Flow is B to AB) maintaining full flow through the bypass port. Actuators are 2-position spring return operation. The NO/NC valve position on power failure (relative to water flow through the coil) is determined by the actuator model selection and must be compatible with the thermostat/control package selection.

Actuator are available for line and 24 Vac low voltage applications.

- Nominal size: 1/2" (13), 3/4" (19) or 1" (25).
- Body material: Brass.
- Pressure rating: 125 psi maximum.
- Temperature rating: 230°F maximum.
- Maximum close off pressure: 44 psi.
- Cv: 2.5 (1/2"), 4.1 (3/4"), 7.0 (1").
- Actuator power consumption: 10 VA maximum.



3-Way, 2 Position Valve/Actuator



Modulating Valve/Actuator

2-WAY & 3-WAY MODULATING CONTROL VALVE/ACTUATOR

Valve operation is similar to 2-Way and 3-Way descriptions in Sections 4.6.1 and 4.6.2 respectively.

Actuators use a 0 – 10 Vdc control signal, are fail-in-place design (non-spring return) and provide proportional control from minimum to maximum water flow through the coil in response to room demand from a compatible controller.

Modulating valves are standard on Nailor analog and digital EPIC control package chilled water valves.

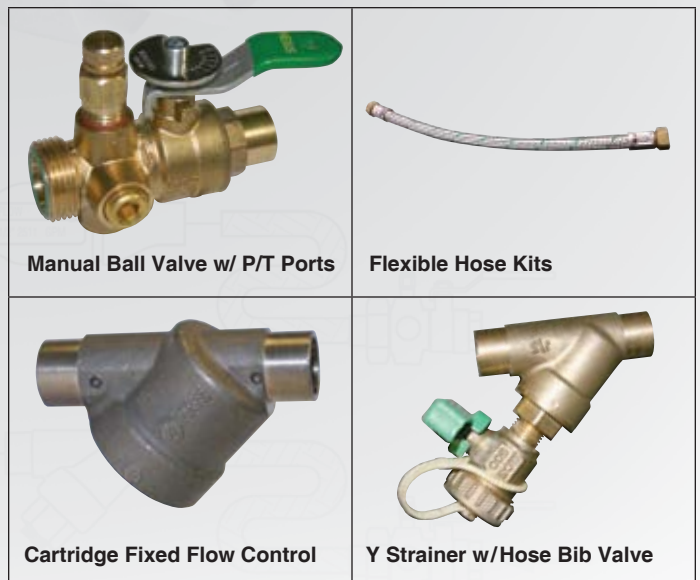
Actuator are 3-wire 24 Vac only (2.5 VA).

REPRESENTATIVE VALVE PACKAGE COMPONENTS

Engineered Comfort offers a variety of valve package components to meet the demands of simple to complex project requirements. Not limited to "standardized" packages or vendors, a solution is often available through the custom design of your job specific project.

Available Factory Components:

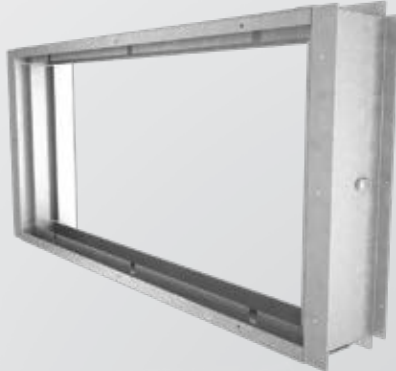
- Manual Ball Valves.
- Fixed Flow Controls.
- Pressure/Temperature (P/T) Ports.
- Flexible Hose Connections.
- Unions.
- Y Strainers.
- Circuit Setters.
- Aquastats.
- Air Vents (automatic and manual).



FILTERS

Ducted Filter Rack Option for 35FH and 37FH Series

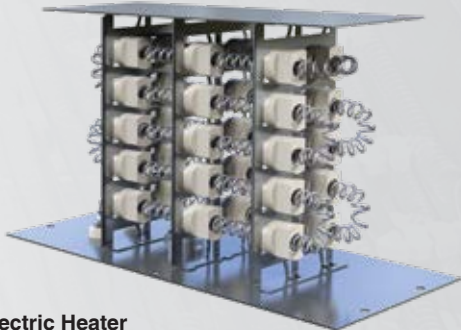
- The FFR Ducted Return Filter Connection is an optional accessory used for ducted inlet applications where easy accessibility to the filter is required.
- The hinged door flap with latch on the side and bottom of the unit accessory allows for easy removal and replacement of the filter.
- The filter rack accommodates a 1" (25) or 2" (51) optional filter. Factory mounted on the induced air inlet of the draw through water coil section and comes with a duct collar.



FFR – Ducted Return Filter Connection



Front: 1" (25) Throwaway, Mid.: 2" (51) MERV 13, Back: 2" (51) MERV 8



Electric Heater



ELECTRIC HEAT

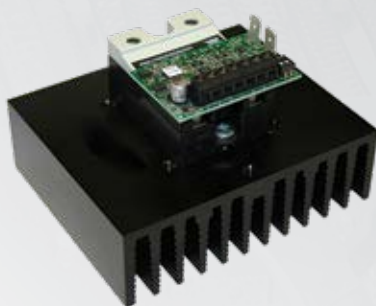
Electric heat coils are available factory mounted on the unit discharge. Nailor Electric Coils are tested with the fan terminal in accordance with CSA 236/UL 1995 and meet all the requirements of the NEC. Units and heaters are listed and labeled by the ETL testing Laboratory as an integrated package. A NEMA 1 enclosure with hinges is placed at the side of the fan coil to provide easy access. All motor and heater wiring terminates in the enclosure for single point electrical connection.

Standard Features

- Automatic reset high limit thermal cut-outs.
- Magnetic contactors per stage w/DDC or Analog electronic controls.
- Control voltage transformer (Class 2) for DDC & Analog controls.

Options

- Toggle Disconnect.
- Door Interlocking disconnect switch.
- Quiet contactors.
- Power circuit fusing.
- Dust tight control enclosure.
- High grade Class A 80/20 nickel/chrome elements.
- Manual reset secondary high limit.
- Airflow Safety Switch, electronic interlock (on EPIC ECM only) or mechanical.
- Positive pressure air flow switch.
- 1 or 2 Stage Electric Heat (model dependent).
- SCR Control for quieter and variable wattage. The SCR (Silicon Controlled Rectifier) option provides infinite heater control using a proportional control. In addition to superior comfort and energy savings, contactor noise is eliminated and life of the electric heater element is extended. This option is normally specified with all analog electronic, or DDC controls. SSR with 4 – 20 ma 0 – 10 Vdc control.



SCR Control

ENERGISTICS

INDEPENDENT LABORATORY CERTIFICATION AND TESTING

Engineered Comfort is committed to providing accurate and reliable performance data on our entire range of products. We voluntarily certify our product performance with the Air Conditioning, Heating and Refrigeration Institute (AHRI); an independent rating/testing agency.

During product development stages and ongoing quality audits, Engineered Comfort enlists an independent testing facility, Energistics Laboratory, to conduct all performance and agency compliance testing. Energistics Laboratory is a state-of-the-art facility complete with all of the equipment and personnel necessary to ensure that we comply with applicable industry standards. Every aspect of fan coil performance data from electrical, capacity analysis, sound level data and even project specific mockups can be performed at one location. Even though sound certification is not currently required under the AHRI 440 program, sound data is taken in accordance with the most applicable sound standard that mimics unit application.

Our project experience, coupled with our commitment to complete independent testing, will serve to demonstrate we offer the most comprehensive, reliable and energy efficient fan coil systems in North America.

Performance & Smoke Pattern Test Lab



Psychrometric Test Lab



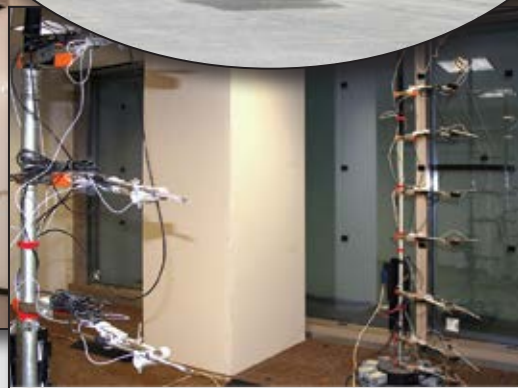
Simulation/Mock-up Test



Reverberation/Sound Room



Wind Tunnel



Curtainwall Facility

Not Shown: IN-SITU Room





EZstat FAN COIL CONTROLLER

Engineered Comfort offers a full range of commercial quality fan coil products. Experience has built a solid reputation for design and engineering excellence, performance, flexibility and creativity. Whether your project requires a standard or customized design, **Engineered Comfort** is capable and ready to provide a complete solution.

Having pioneered, in recent years, the introduction of the ultra-energy efficient EC motor to the fan coil market along with the EPIC Fan Technology®, we now are pleased to announce the addition of the EZstat Direct Digital Controls (DDC) to our product line.

FEATURES

The single component DDC fan coil thermostat, EZstat, has arrived! The EZstat is an all-in-one space mounted fan coil controller ready for standalone or BACnet operation right out of the box. The EZstat includes a wide range of factory configured control sequences for two and four pipe fan coil units. Standalone EZstat operation requires no special programming, software applications, or setup tools to configure and commission. All options can be set by using only the five front panel buttons and the easy-to-read menus in the full color display.

The EZstat possesses a multitude of features and capabilities that make it stand out against its' competition.

- Cost-effective combination of networking, application, and sensor options
- Drop-in replacement for most antiquated and bulky competitor's controllers with separate temperature sensors
- Options include two- or four-pipe heating/cooling, VAV modulating fan control, and two-way On/Off (for heating application, only) or modulating valves.
- Auto 2-pipe changeover when used with a mode sensor
- Colored backlit display which displays temperatures in either °F or °C.

SPECIFICATIONS

Material: White flame-retardant plastic

Weight: Approx. 6 oz. (170 grams)

Supply Voltage: 24 VAC (-15%, +20%), 50-60Hz, 12 VA, Class 2 only, non-supervised (all circuits, including supply voltage, are power limited circuits)

Screen Type: 128 x 128 pixels, Active color LCD with LED back lighting, 1.00 x 1.04 inches (25 x 26 mm)

Regulatory: UL 916 Energy Management Equipment
FCC Class A, Part 15, Subpart B and complies with Canadian ICES-003 Class A



CONSIDER THIS

The attractive and sleek design is ideal for new installations or upgrades of older, less capable thermostats.

BENEFITS:

- EZstat installation requires only mounting the backplate to a wall or electrical box, connecting wires to screw terminals, and plugging the EZstat into the backplate.
- The full color display is easy to read across a room even in bright sunlight.
- The EZstat meets or exceeds BACnet® Application Specific Controller (ASC) specifications in the ANSI/ASHRAE BACnet Standard 135-2008. This enables the controller to integrate seamlessly with either a future or existing BACnet BAS network.

SNAPSHOT

- Easy start up
- Easy installation
- Standalone or Network operation
- BACnet ready
- Cost savings
- Energy savings
- 7-day occupancy schedule
- Intuitive field configuration and operation
- Standard control sequences factory programmed
- Full color contemporary LCD display





Quality Fan Coil Units

International Group Locations:

Engineered Comfort

4714 Winfield Rd.,
Houston, Texas 77039
U.S.A.
Tel: (281) 590-1172
Fax: (281) 590-3086
engineered-comfort.com

Engineered Comfort

200 Norfinch Drive – Unit A
Toronto, ON M3N 1Y4
Canada
Tel: (416) 742-5515
Fax: (416) 736-4262
engineered-comfort.com



Commercial Air Terminal & Fan Coil Units,
Air Distribution & Air Control Products (Worldwide).
nailor.com



Thermal Air Handlers for Thermal Comfort
(North America).
thermal-corp.com



Commercial Air Terminal & Fan Coil Units,
Air Distribution & Air Control Products
(United Kingdom and Europe).
www.advancedair.co.uk

engineered-comfort.com

WFCPL