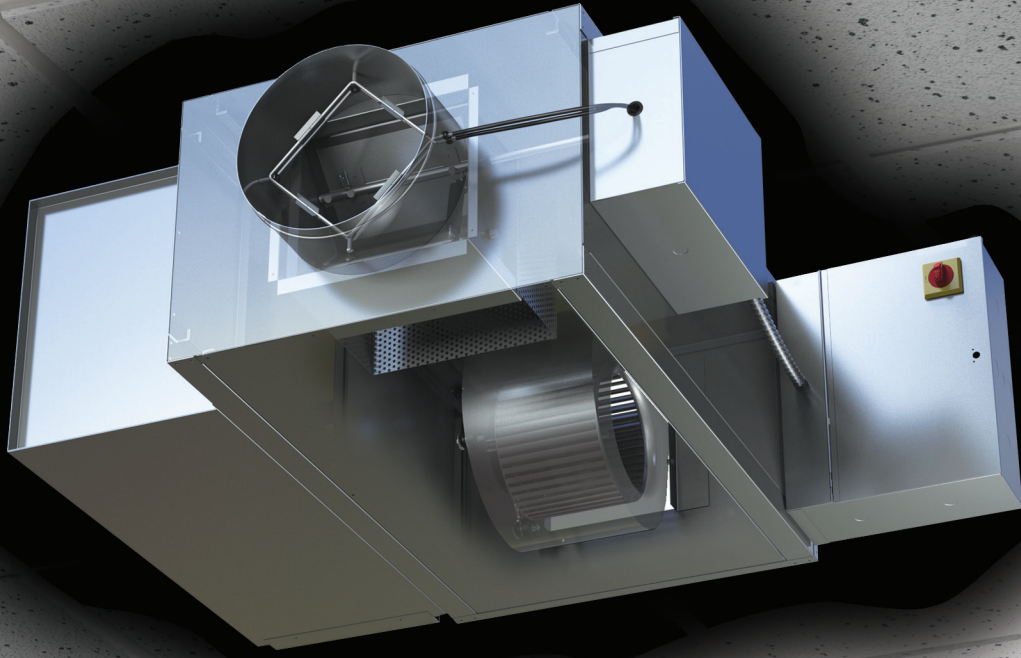


SOUND SOLUTIONS

NAILOR'S "STEALTH™" FAN POWERED TERMINAL UNIT



NAILOR IS AHRI CERTIFIED AND ETL LISTED

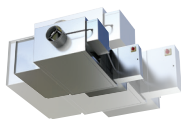


NAILOR IS 100% INDEPENDENTLY CERTIFIED

- Every size of every model of Nailor Terminal Units has been tested at every catalogued operating point and certified by Energistics Laboratory

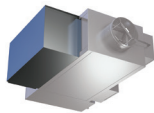
NAILOR UNITS ARE SMALL

- Smallest footprint in the industry
- Easy to handle
- Easy to hang



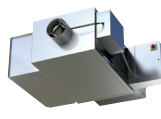
NAILOR UNITS ARE QUIET

- Basic unit is quiet
- Stealth™ units are among the quietest among the industry



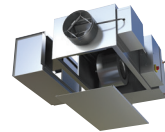
SPACE FRAME CONSTRUCTION

- 18 ga. rails provide structural strength and secure mounting
- 20 ga. insulated access panels



SUPERIOR ACCESS

- Space Frame construction provides universal access to all four sides of the unit, not just bottom or side



JOB SITE FLEXIBILITY

- Unit may be flipped over for right or left hand orientation

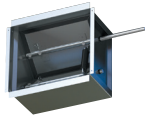


- Optional FN2 90° discharge enclosure helps compliance with NEC clearance requirements



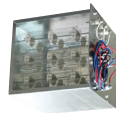
NAILOR, THE FIRST TO OFFER ECM MOTOR TECHNOLOGY

- Factory pre-set air volume capability
- 67% typical energy savings compared to PSC motors
- Pressure independent fan operation
- LED for visual indication of air volume
- Field adjustable fan air volume controller
- Remote fan air volume adjustment capability with analog voltage input from BMS
- Large turn down ratios mean more flexibility for tenant changes



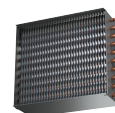
DAMPER

- Opposed blade damper with 45° closure
- Good linearity with constant rate of change for BTUH to space



NAILOR ELECTRIC HEAT OPTION

- High efficiency arrowhead insulators eliminate glow and extend element life
- Manufactured in-house by Nailor
- Removable element rack



NAILOR HOT WATER HEAT OPTION

- Access panels that expose both faces of coil for cleaning and inspection
- Encased headers and return bends
 - No heat loss in heating condition, no heat gain in cooling condition



MULTI-POINT DIAMOND FLOW INLET SENSOR

- +/-5% accuracy even with hard 90° elbow at the inlet
- Durable aluminum construction
- Manufactured by Nailor

www.nailor.com

HOUSTON, TEXAS
Tel: (281) 590-1172

LAS VEGAS, NEVADA
Tel: (702) 648-5400

TORONTO, CANADA
Tel: (416) 744-3300

CALGARY, CANADA
Tel: (403) 279-8619

THETFORD, ENGLAND
Tel: (01284) 701356

Nailor[®]
Industries Inc.